

CARD RATE: AUSTRALIA

The 6 cents card rate was not much used as few tourists visited Christmas Island and picture postcards were not sent by locals.

Christmas Island Aust 2 Indian Ocean 18 May 1962, received 30 May

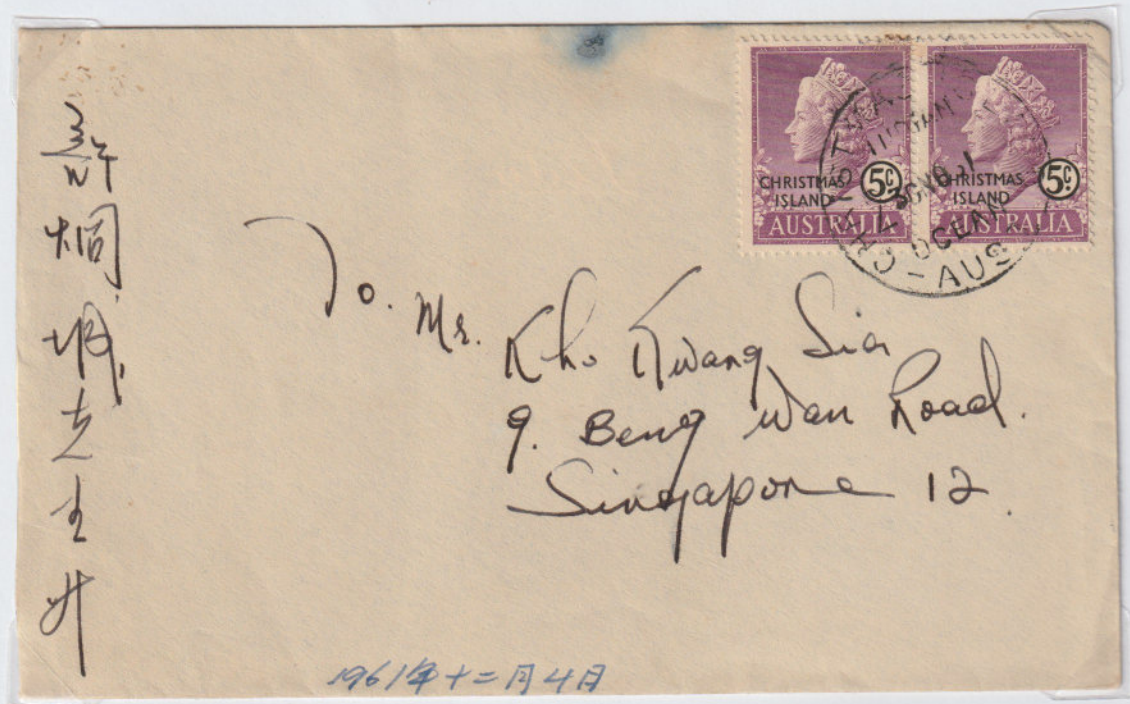


廣播主任先生
 鄙人對貴台聽眾點唱
 很感興趣，現來信點唱下列
 一首歌（*心路言，聽其細部*）
 請早日來信賜知，謝謝
 順頌：
 報安 印度洋 陳偉海 啓
 聖誕島
 一九六二年 五月十二日

British Phosphate Commission

SURFACE RATE: SINGAPORE

The Letter rate to Singapore remained at 10 cents. Letter in Chinese enclosed.



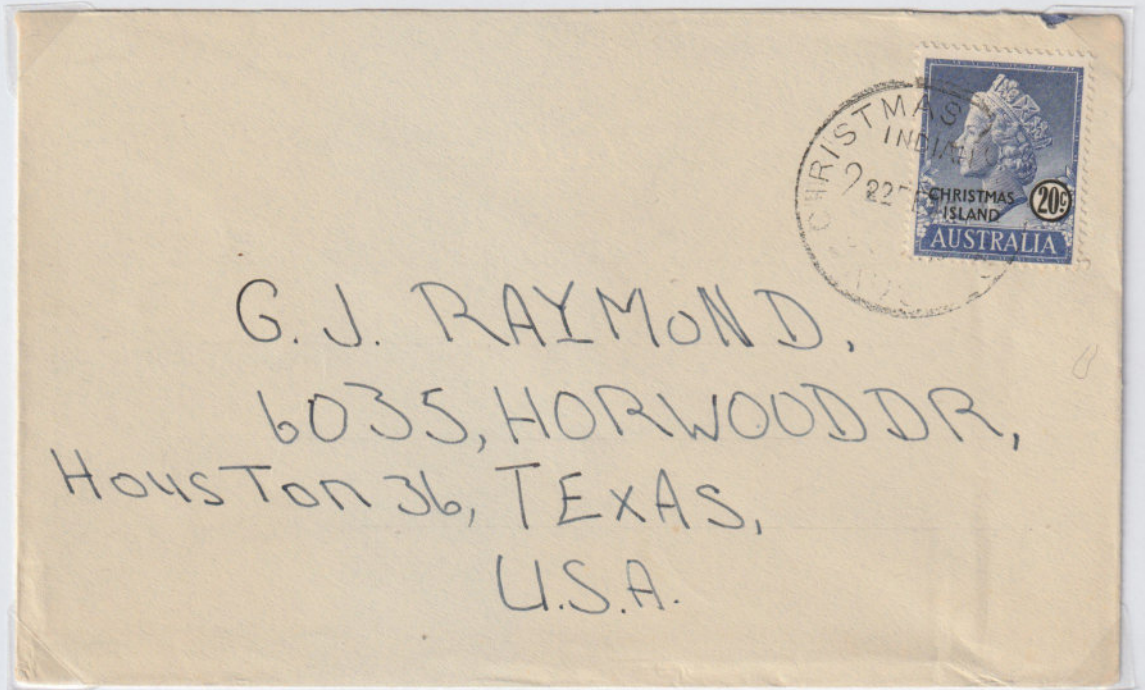
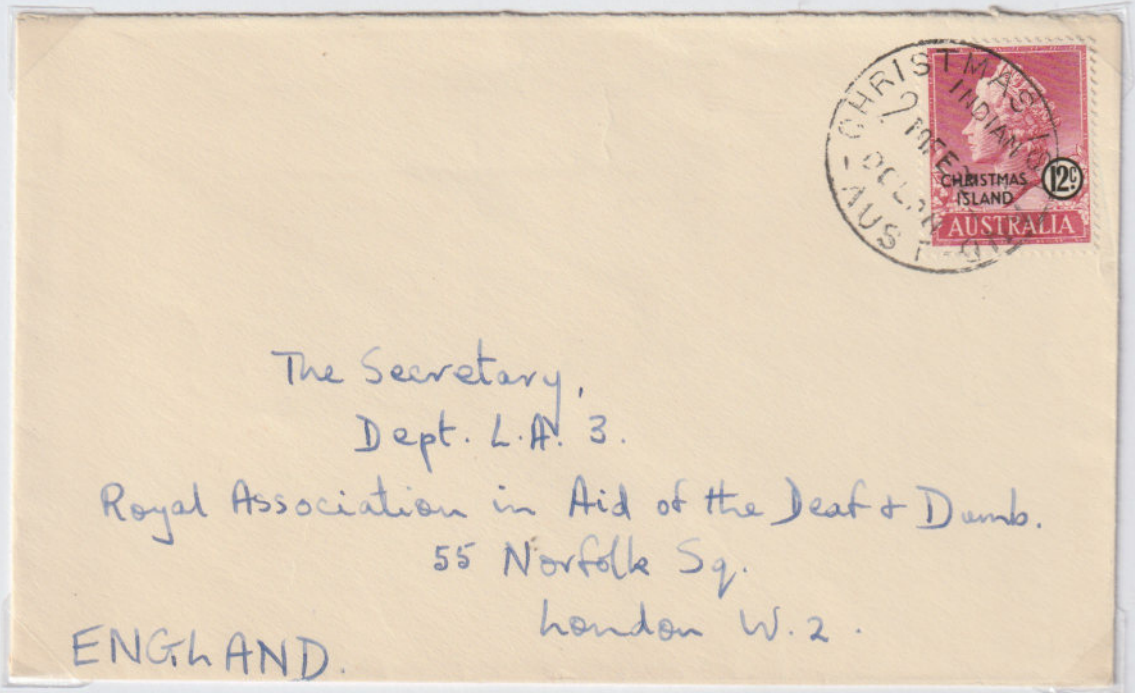
Christmas Island Aust 2 Indian Ocean 30 June 1959, 2 ounces

SMALL PACKET RATE: USA

British Phosphate Commission

SURFACE RATE: COMMONWEALTH

British Commonwealth countries surface rate 12 cents plus 8 cents each additional ounce.
Christmas Island Aust 2 Indian Ocean 18 February 1962

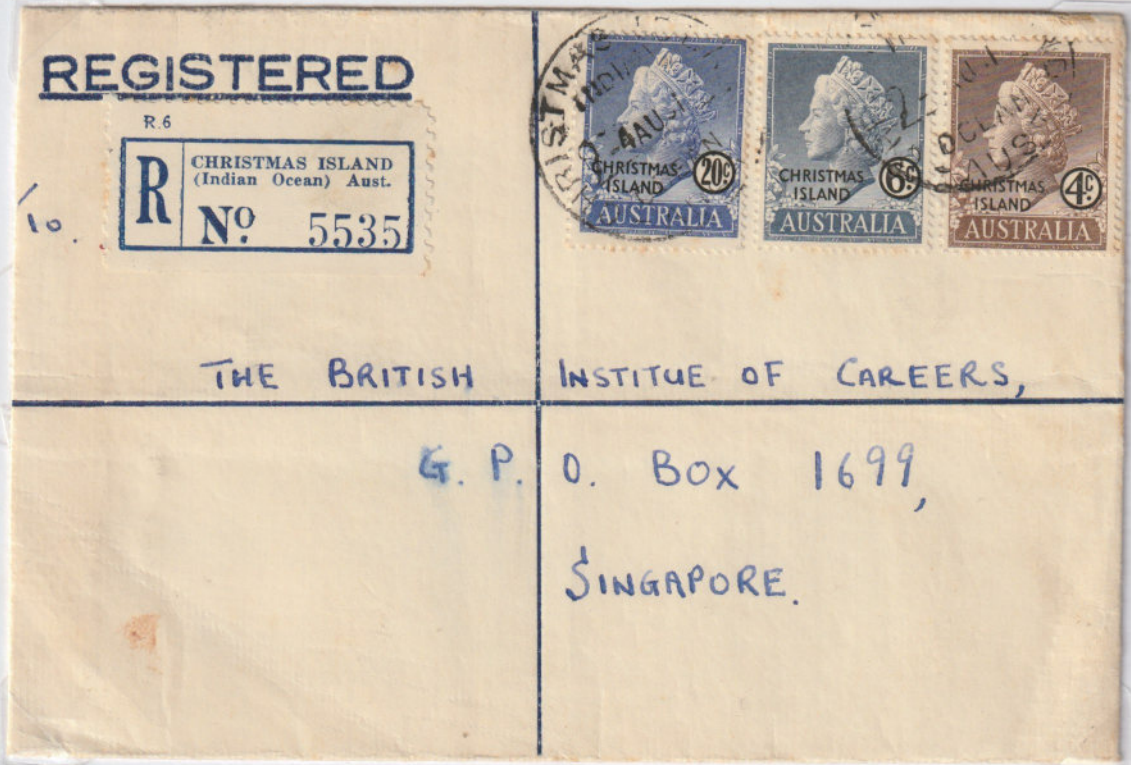


Surface rate to Other Countries was 20 cents plus 12 cents each additional ounce.
Christmas Island Aust 2 Indian Ocean 22 February 1959, received 5 May

SURFACE RATE: USA

REGISTERED

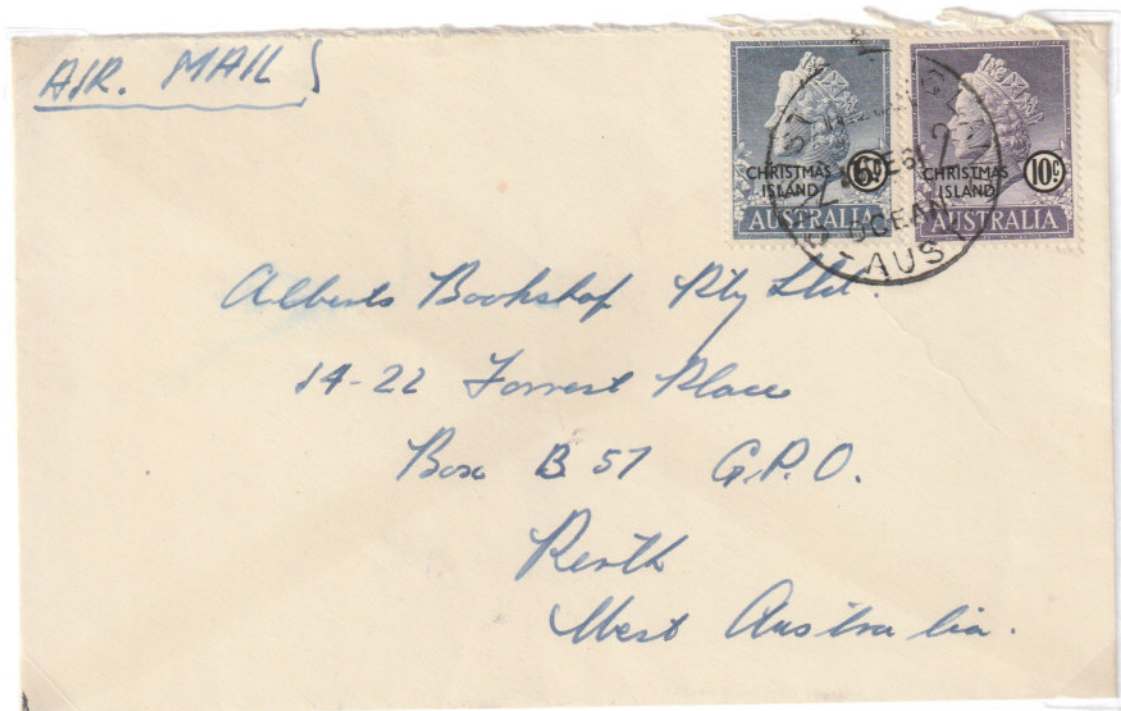
Registration was 20 cents in addition to 10 cents postage. Registration label specified Indian Ocean Aust. to make clear which Christmas Island and the new administration. Christmas Island Aust 2 Indian Ocean 4 November 1960, Singapore 8 November



Sender's address: South Point Christmas Island
Christmas Island Aust 2 Indian Ocean 4 August 1961, Singapore 7 August

AIRMAIL RATES: AUSTRALIA

Airmail rates listed in *Philatelic Bulletin* (August 1958 are extraordinary; 8 cents plus postage (whatever that was). Possibly that was 18 cents but this cover (and another in March 1958) are franked at 16 cents. The Australian rate change on 1 October 1959 seems to have made no difference to Christmas Island rates.
Christmas Island Aust 2 Indian Ocean 13 December 1961



Either the sender was not aware of the airmail rate and thought it was still 50 cents or the letter was between 2 and 2½ ounces.

Christmas Island Aust 2 Indian Ocean 18 January 1962

AIRMAIL RATES: INTERNATIONAL

The *Philatelic Bulletin* (August 1958, p.6) lists 18 different airmail rates to specified countries rather than the Australian system of airmail zones. Collecting this class of mail franked at the correct rate is something of a challenge.² Overpaid 1 cent for 25 cents rate for Ceylon and Hong Kong. Christmas Island Aust 2 Indian Ocean 5 June 1962



Correct 70 cents rate for Great Britain, Northern Ireland, Eire, and Italy
Christmas Island Aust 2 Indian Ocean 6 October 1962

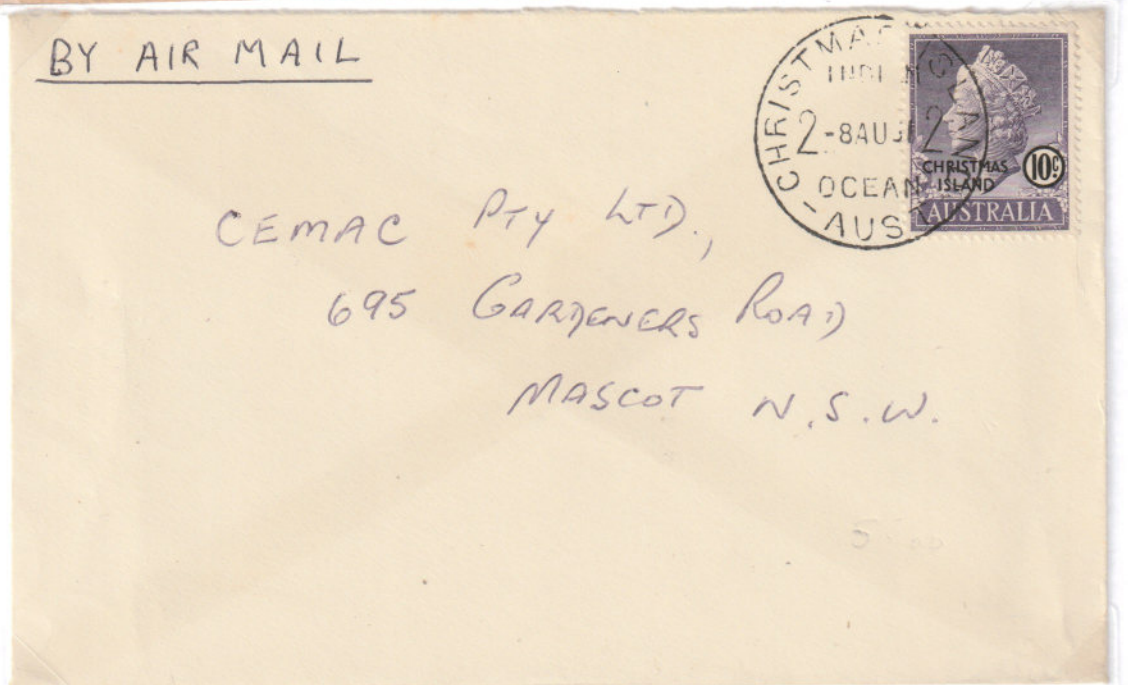
² 2 Haynes, B. (2009). Christmas Island: Australian Territory/WA post office 6798, *Black Swan*, 13, 2

British Phosphate Commission

AIRMAIL ROUTES: AUSTRALIA

Airmail to Australia usually went via Singapore but could go on phosphate ships to Fremantle. This cover (overfranked 10 cents) indicates that datestamp 1 was in use on Christmas Island at this time. It also confirms mail by sea via Fremantle and onwards airmail.

Christmas Island Aust 1 Indian Ocean 22 August 1959, Fremantle 1 September, Melbourne 5 September, Caulfield East 7 September



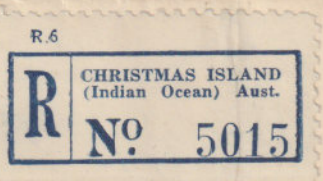
Airmail within Australia was included in the base postage rate after 1959. If shipped to Fremantle, this cover would have been flown from Perth to Sydney.

Christmas Island Aust 2 Indian Ocean 8 August 1961

AIRMAIL ROUTES: AUSTRALIA

This belated Christmas present lacks backstamps so the route cannot be determined but it is presumed to have flown as instructed.

Christmas Island Aust 1 Indian Ocean 5 July 1961



AIR MAIL -

PLEASE ROUTE DIRECT FLIGHT SINGAPORE/PERTH

MRS. M.A. GRIFFITHS

Mr. C.F. Buttle,
52, Napier Street,
COTTESLOE.
Western Australia
Australia.
via Singapore.

WISHING YOU AND YOURS

A HAPPY CHRISTMAS, 1966.

AND GOOD HEALTH FOR 1967

Clement J Buttle



O.H.M.S.

AIRMAIL

SERVICE DES POSTES



Rev. James Mathers.
The manse 58 Redmyne
Strathfield
NSW 2135

COMMONWEALTH OF AUSTRALIA
POSTMASTER-GENERAL'S DEPARTMENT,

This cover was flown via Singapore.

Christmas Island Aust 2 Indian Ocean 8 June 1968, Sydney 27 June, Strathfield 28 June,
Strathfield 29 June

British Phosphate Commission

INTERNATIONAL ROUTES VIA FREMANTLE

These covers prove some Christmas Island international mail passed through Fremantle. Christmas Island Aust 1 Indian Ocean 24 March 1959, Fremantle 2 April, Perth 2 April (to Bristol)

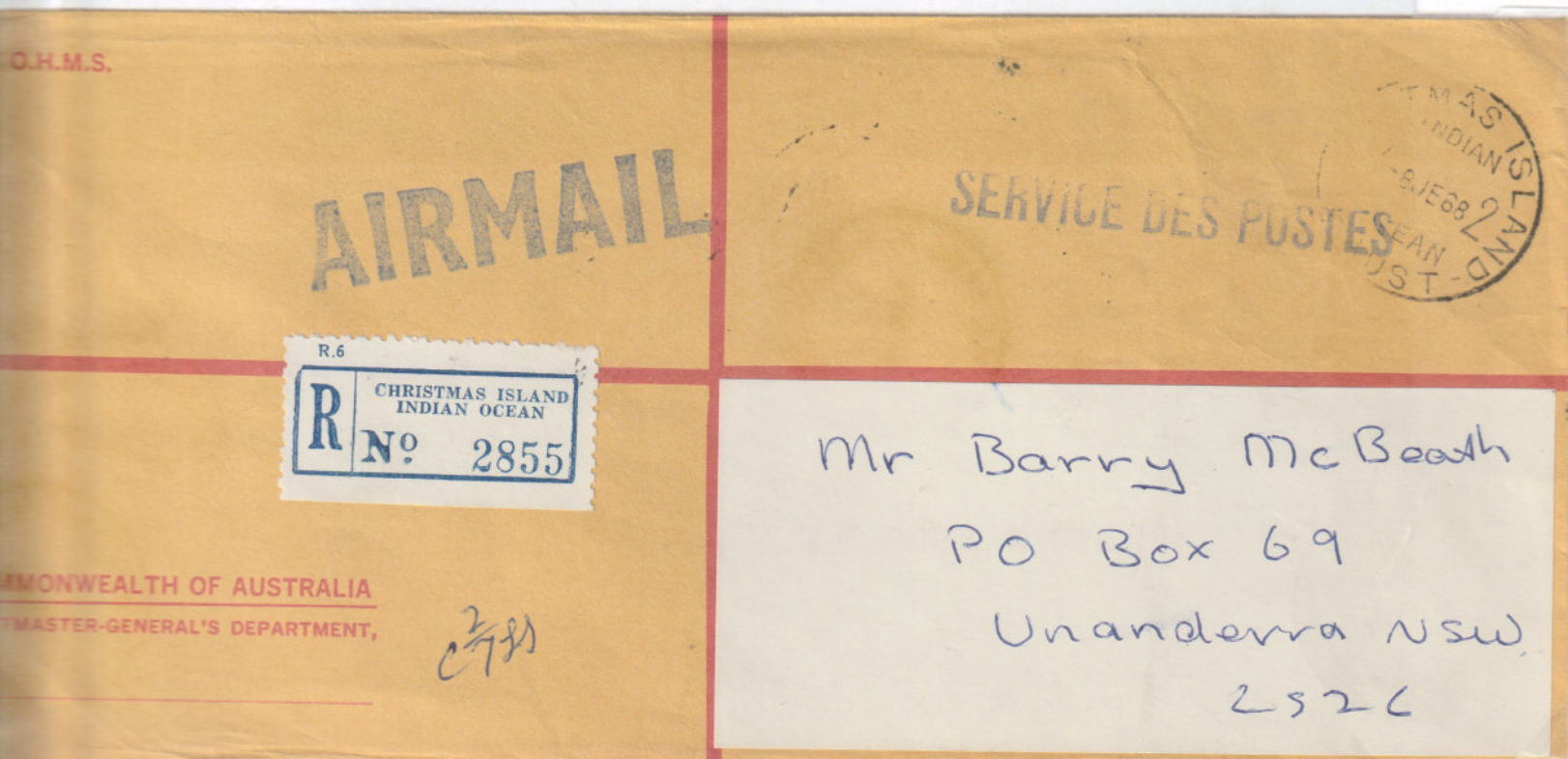


Christmas Island Aust 1 Indian Ocean 5 February 1964, Fremantle 3 March, Sydney 4 March, San Francisco 4 March, San Francisco 5 March (note speed of delivery)

British Phosphate Commission

POST FREE

Official Post Office mail is carried free of postage.
Christmas Island Aust 2 Indian Ocean 5 January 1959



Christmas Island Aust 2 Indian Ocean 8 June 1968

British Phosphate Commission

MELBOURNE OR CHRISTMAS ISLAND

The use of datestamp 1 on the 1958 first day covers suggests that they were struck at the Philatelic Bureau in Melbourne and posted from there. Such a procedure was used for the 1955 Cocos (Keeling) first flight covers and subsequently Australian Antarctic Territory covers were postmarked and posted from Kingston, Tasmania. A rationale for this procedure was that the facilities on Christmas Island were incapable of handling a large quantity of mail in one day. It is possible that requests for incoming philatelic mail (such as this cover) was also handled by the Philatelic Bureau.

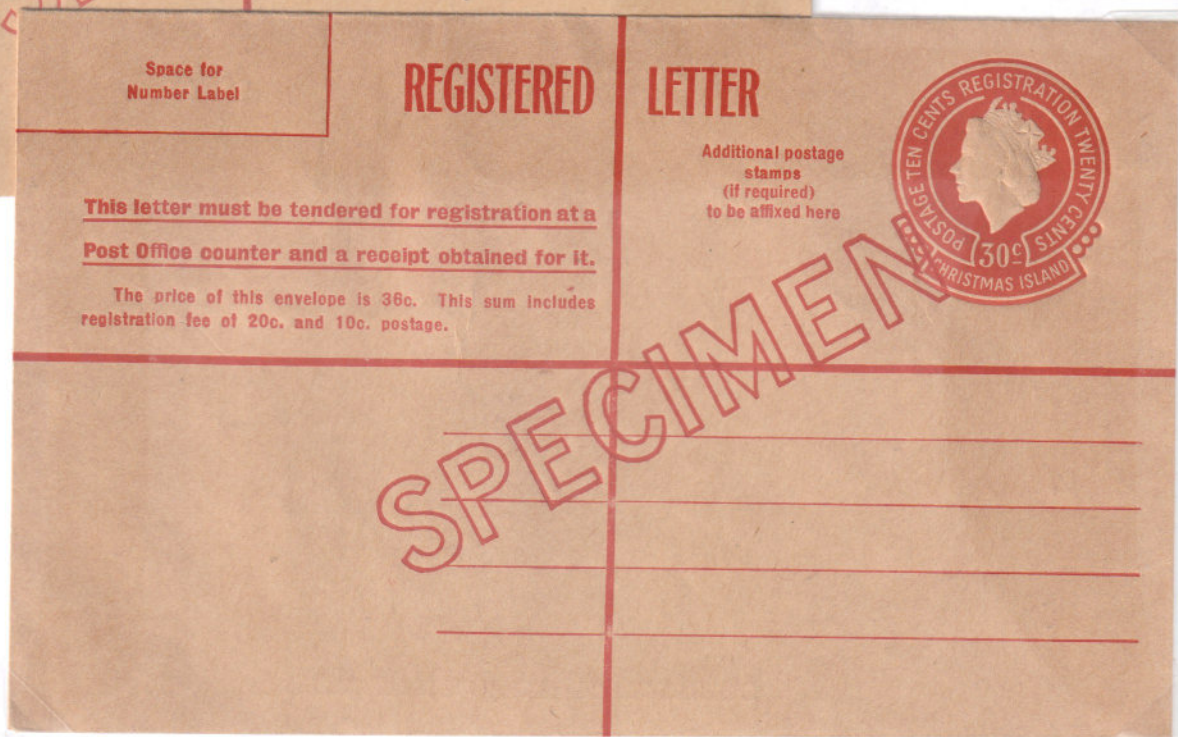
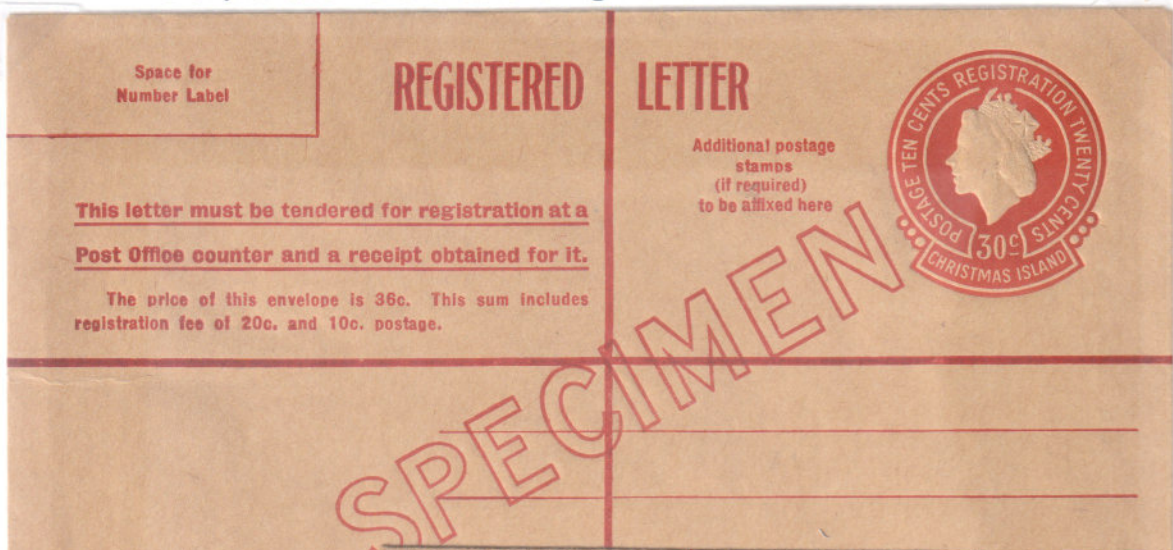
Christmas Island Aust 1 Indian Ocean 12 January 1959, Singapore 23 January, Collegeville 28 January



The Singapore backstamp seems to indicate a Christmas Island posting. The matter remains unresolved.

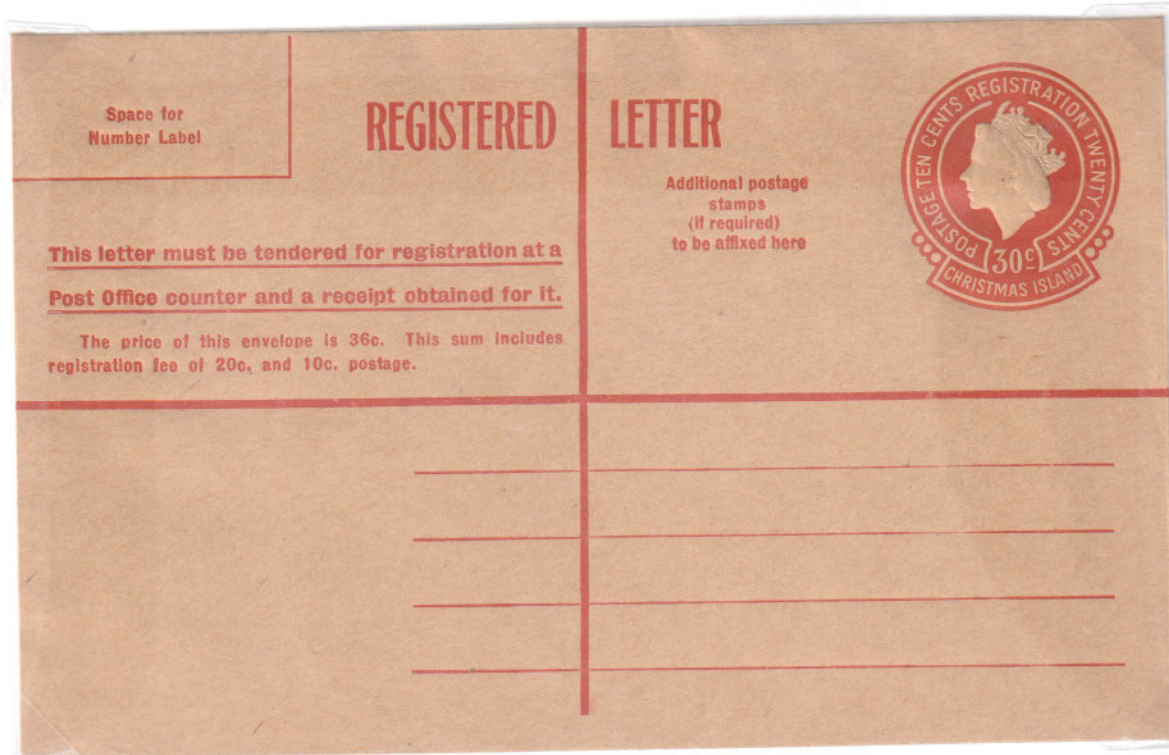
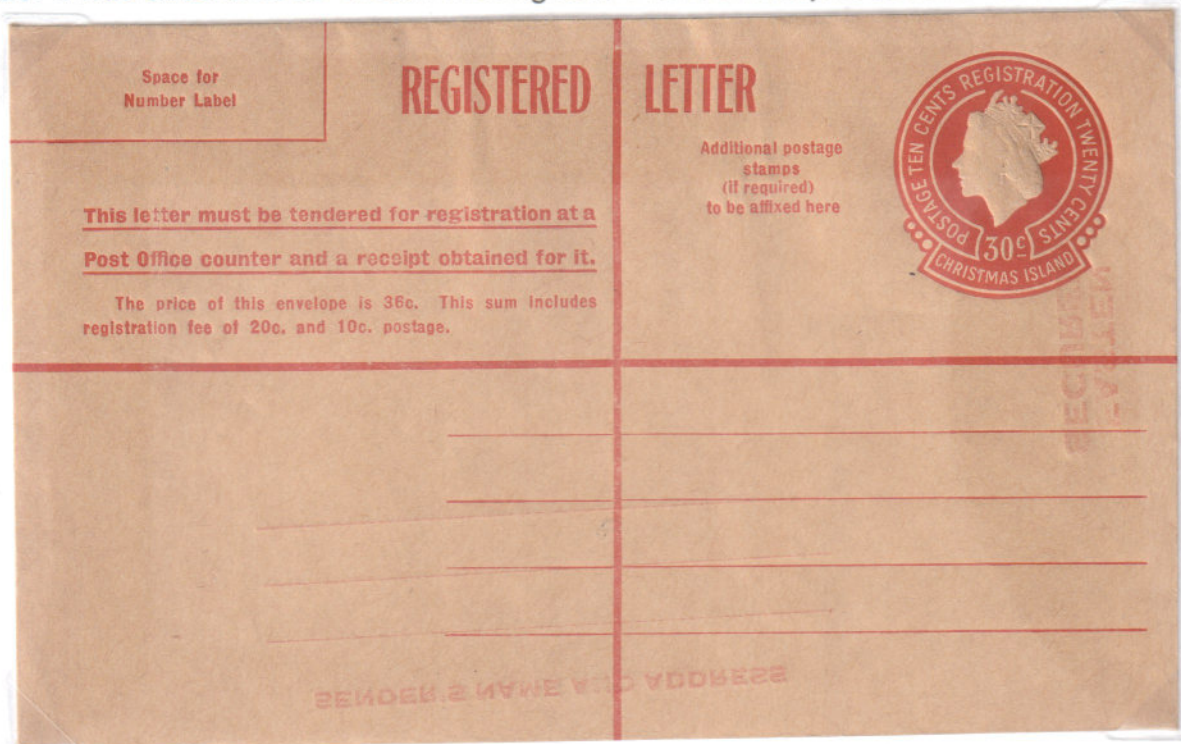
REGISTERED ENVELOPES 1959 – 1969

Until Breckon³ published the relevant correspondence, the published information was misleading and the confused situation of the Christmas Island post office was not known. The Department of Territories administered the island, the BPC operated the post office for the Postmaster General's Department, the PMG Stamps and Philatelic Branch requisitioned supplies from the Note Printing Branch on behalf of Territories, the NPB supplied stocks to the island and the Philatelic Bureau in Melbourne. Demand for registered envelopes for remittances continued under Australian administration but Australian envelopes could not be used – so a Christmas Island registered envelope in Singaporean currency was required. On 6 May 1959 377 envelopes overprinted Specimen were sent to PMG Central Office to be forwarded to the UPU. No explanation is available for light and dark stock.



REGISTERED ENVELOPES 1959 – 1969

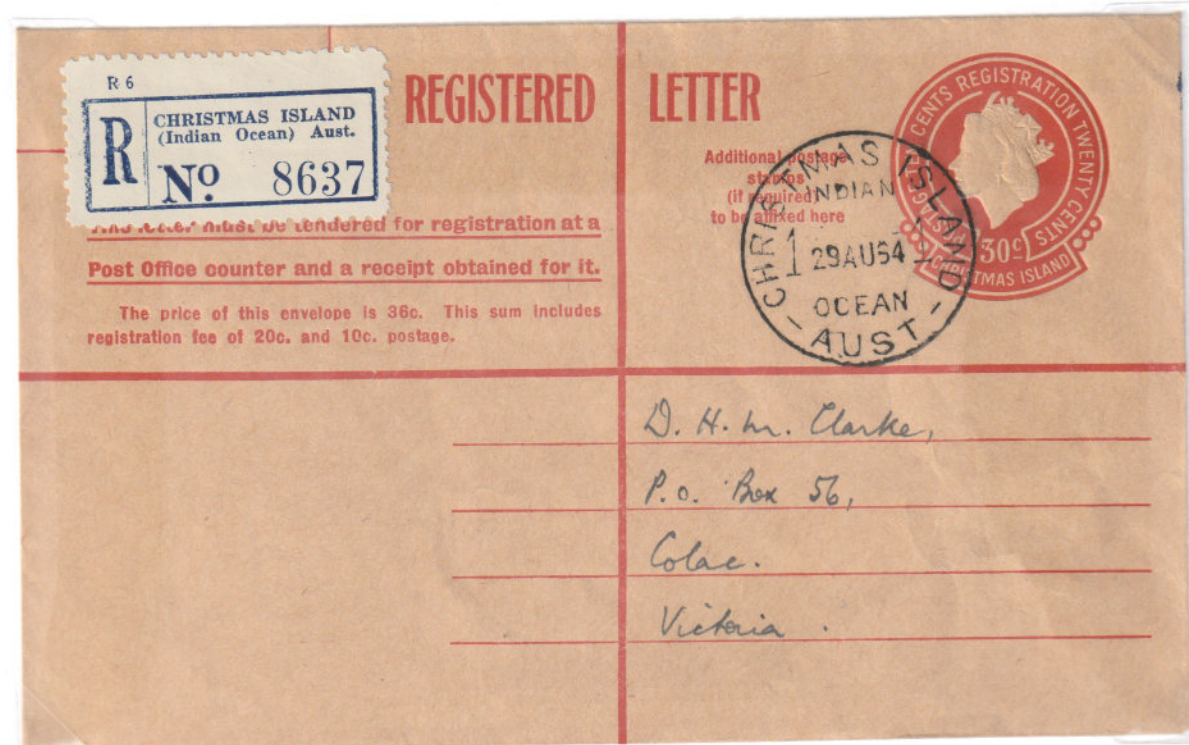
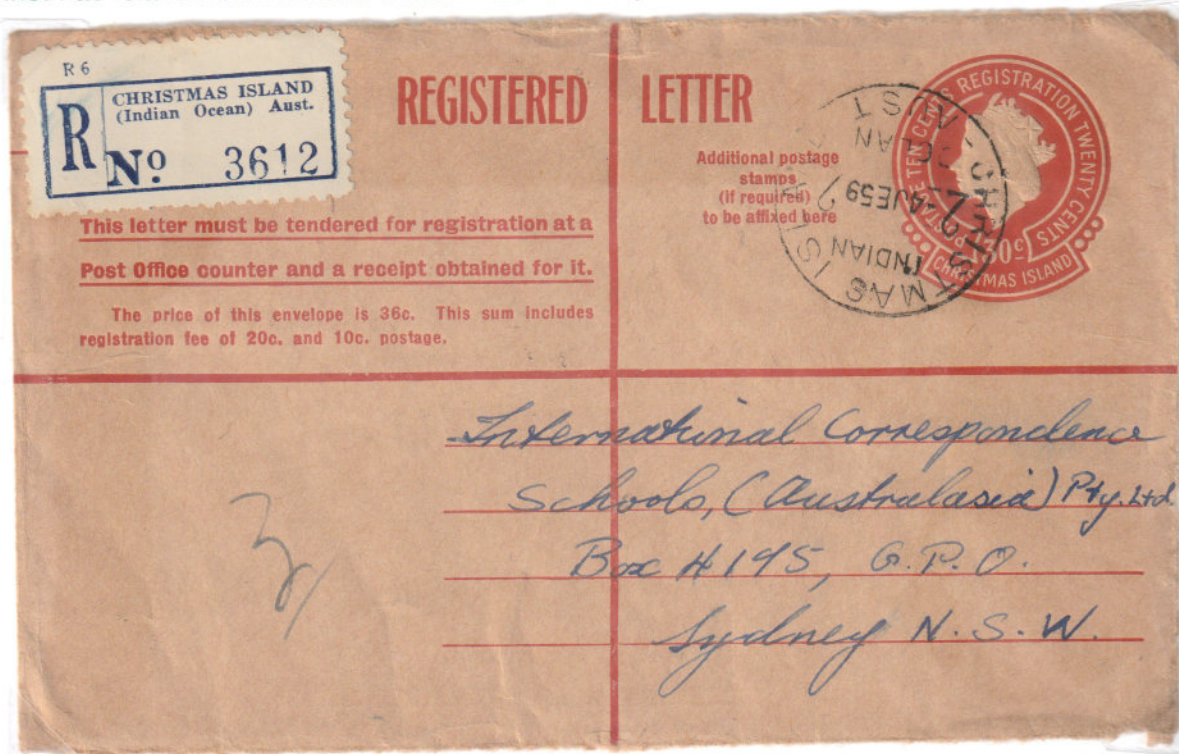
It was finally resolved (about 1967) that a total of 33,800 envelopes from 7 printings had been supplied to Christmas Island post office and the Philatelic Bureau Melbourne, at the latter it was described as "a slow moving item". Mint envelopes confirm variation in stock.



REGISTERED ENVELOPES 1959 -1969

Sales of registered envelopes declined in the late 1960s, the final printing of the Singapore currency 30 cents was in 1967. Limited numbers of used examples indicate that the lighter shade stock was from later printings.

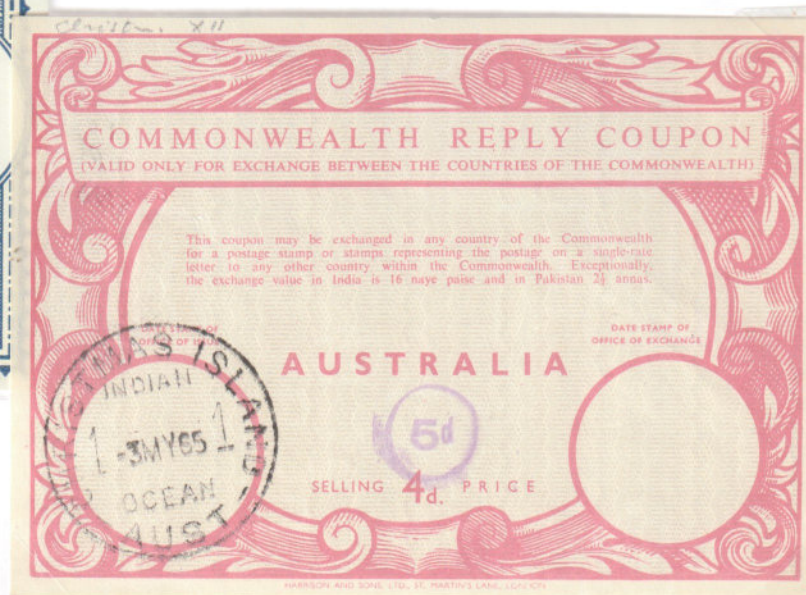
Christmas Island Aust 2 Indian Ocean 4 June 1959, Fremantle 12 June



Christmas Island Aust 1 Indian Ocean 29 August 1964

REPLY COUPON

If registered envelopes were slow moving items in Melbourne, reply coupons were an even slower moving item on Christmas Island. No record of use of Straits or Singapore reply coupons. It would have been simple to revalue Australian coupons in Singapore currency as these were revalued in Australian currency but there seems not to have been a need. Christmas Island Aust 1 Indian Ocean 18 January 1960



Christmas Island
Aust 1
Indian Ocean
3 May 1965



Christmas Island 3 Indian Ocean 22 July 1971, 12 cents uprated to 18 cents (Australian)

PAQUEBOT

Christmas island did not have a paquebot mark. In this case, although the cover may have been posted on board, it did not require a Paquebot mark to legitimate the use of the 12 cents Christmas Island stamp on mail from Christmas Island.

Trienza (phosphate ship) cachet, Christmas Island Aust 2 Indian Ocean 7 April 1960

