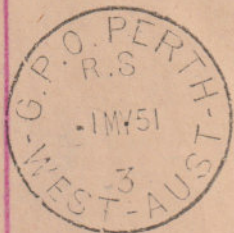
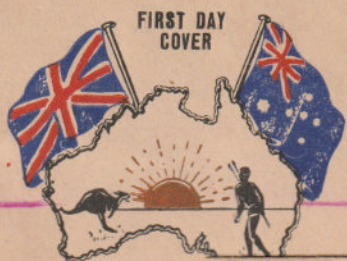


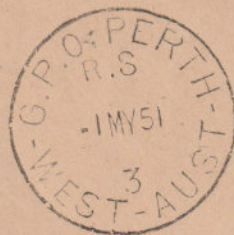
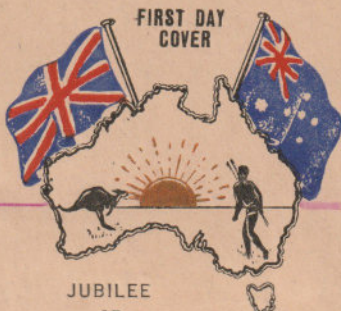
### PHILATELIC MAIL

Inwards mail, even philatelic mail, has a very low survival rate in current collections. One reason is that even these registered covers received no Christmas Island datestamp. GPO Perth 1 May 1951, Fremantle 1 May



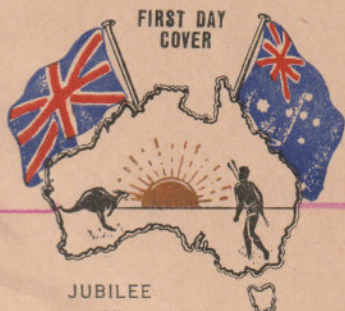
JUBILEE OF FEDERATION 1901-1951

Registration Branch G.P.O., Perth  
**R** No.



JUBILEE OF FEDERATION 1901-1951

Mr B. D. O'Shannassy,



JUBILEE OF FEDERATION 1901-1951

Registration Branch G.P.O., Perth, W.A.  
**R** No. 8464

ISLAND.  
Fremantle. W.A.)

Mr B. D. O'Shannassy,

CHRISTMAS ISLAND.

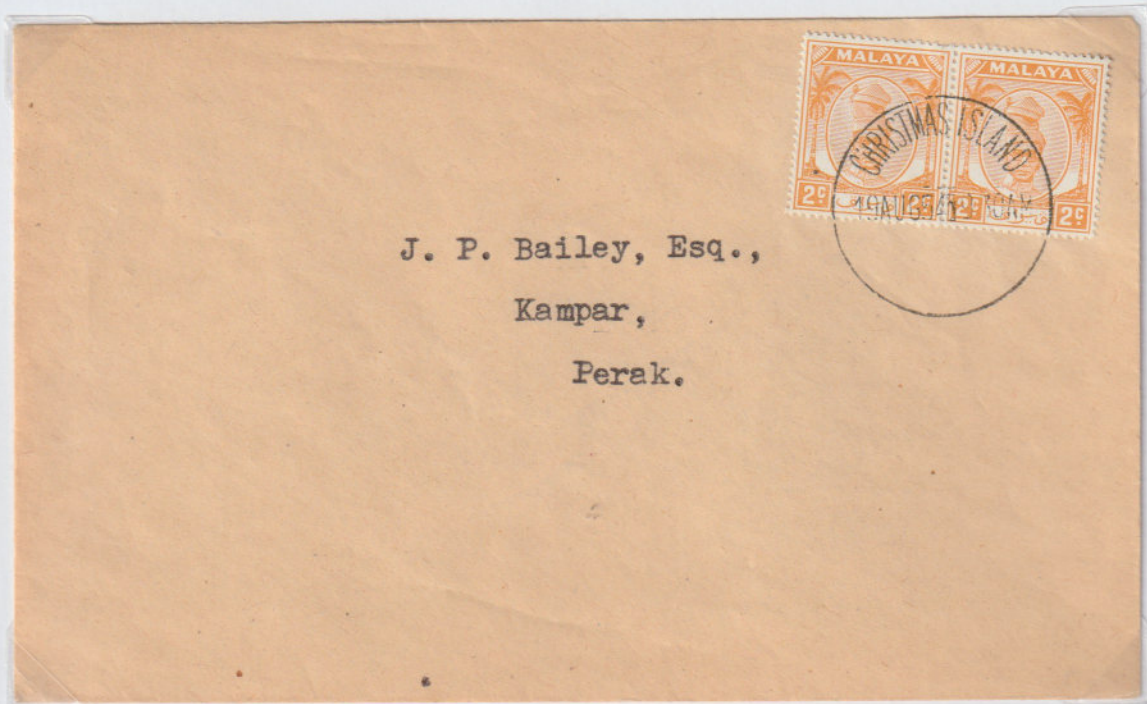
(C/- G.P.O. Fremantle. W.A.)



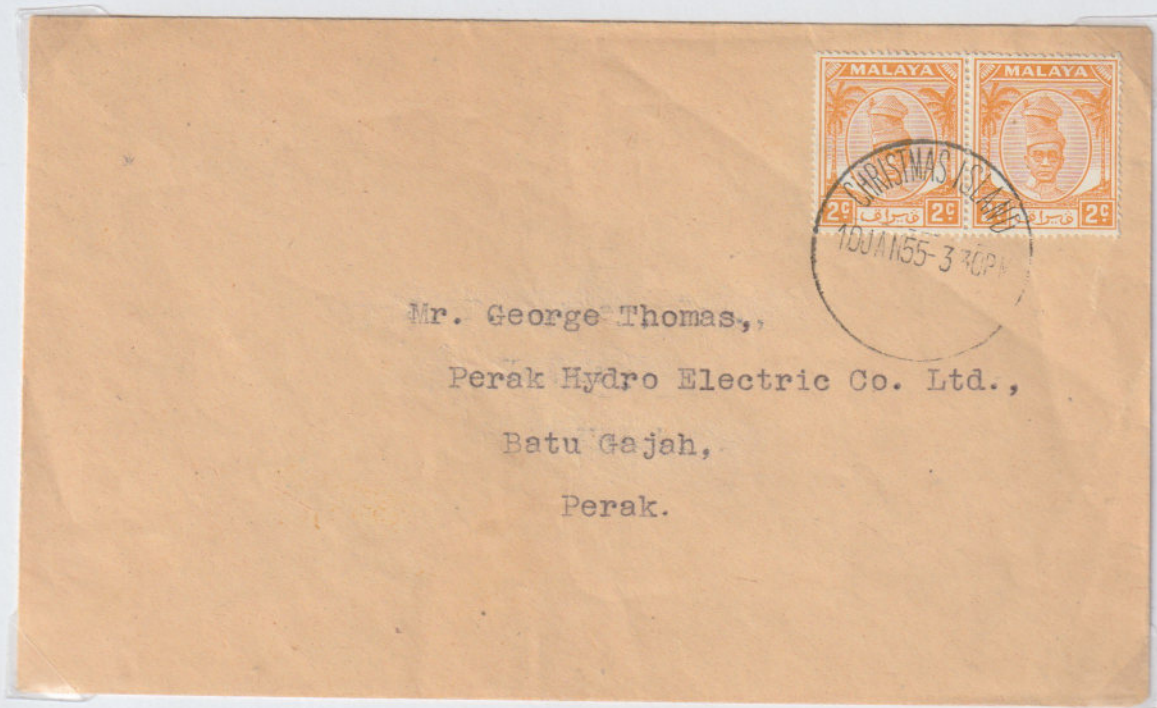
**SECOND CLASS LETTER RATE**

These unsealed envelopes may have been sent at the 4 cents second class rate to Malaya.

Christmas Island 19 August 1954 (30mm datestamp)



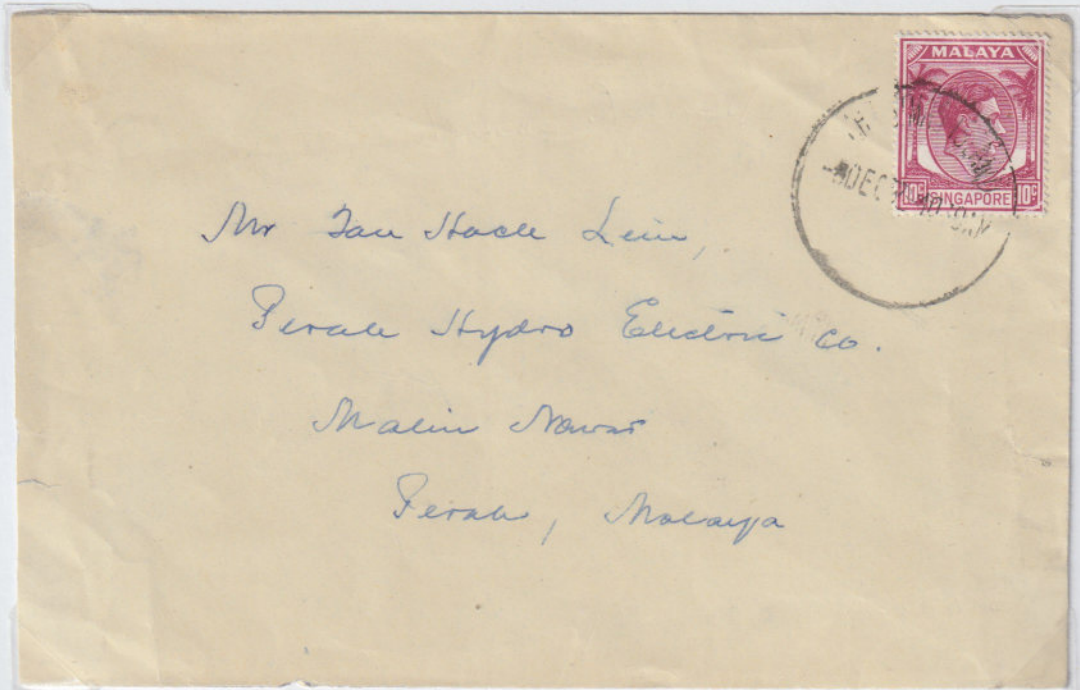
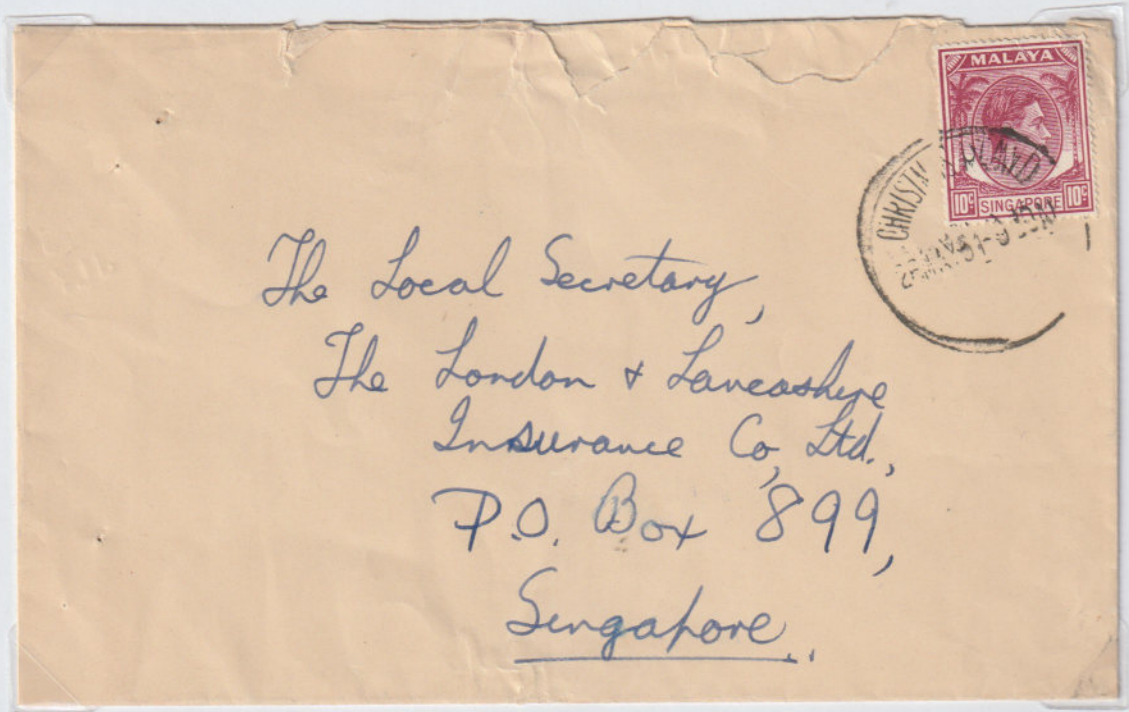
J. P. Bailey, Esq.,  
Kampar,  
Perak.



Mr. George Thomas,,  
Perak Hydro Electric Co. Ltd.,  
Batu Gajah,  
Perak.

TEN CENTS RATE

Surface letter rate to Singapore and Malaya was 10 cents.  
Christmas Island 26 May 1951 (30mm datestamp)





TWELVE CENTS RATE

Surface mail to Australia was twelve cents.

Postmarked Christmas Island 14 May 1953 (26mm datestamp).



*International Correspondence Schools (Australasia) Pty., Ltd.,  
Box 4195 XX  
Sydney,  
New South Wales.*

**CRUISE LINER**

Christmas Island, although isolated and not on any major shipping route, cruise liners finally brought philatelists to post items from the post office.

Postmarked Christmas Island 29 June 1955 (26mm datestamp) addressed to Commonwealth Bank, Sydney, NSW.

WORLD CRUISE OF THE "MARCO POLO"

3



M. KING

Commonwealth Bank of Australia

BARRACK STREET BRANCH

402-404 BARRACK STREET, SYDNEY, N.S.W.

Commonwealth Bank of Australia

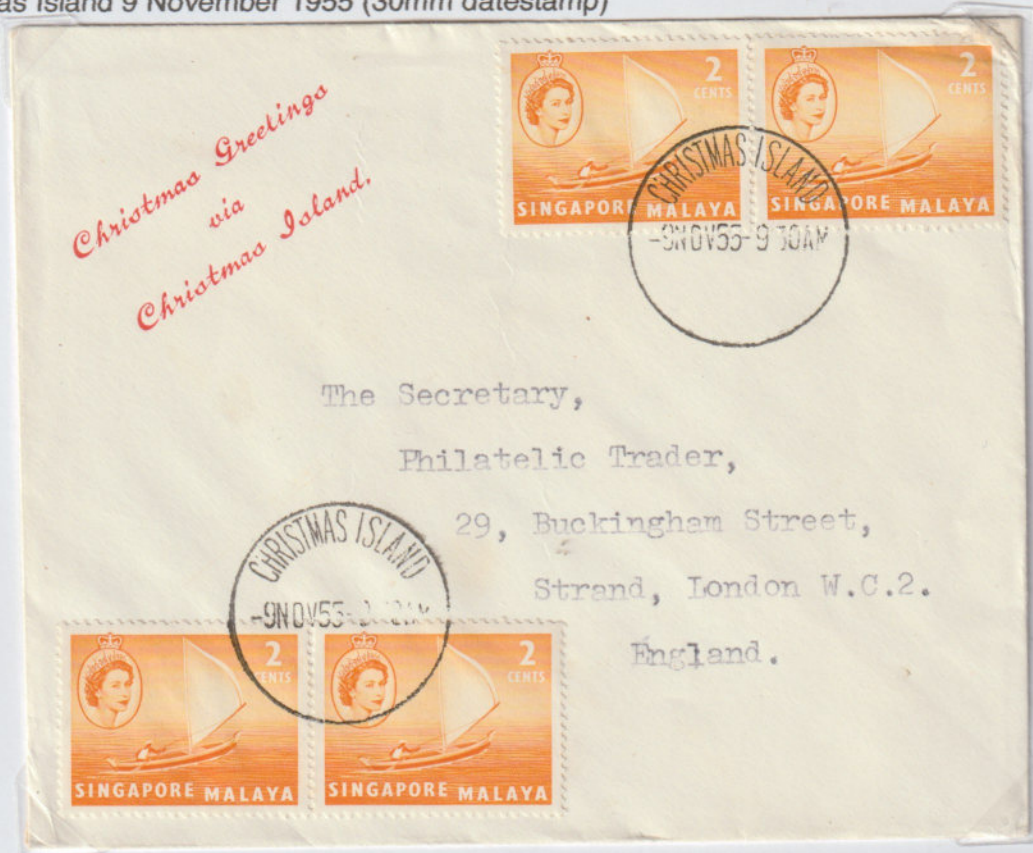


Singapore Administration

**EIGHT CENTS RATE**

This unsealed envelope with Christmas card may have been sent at the overseas second class 8 cents rate.

Christmas Island 9 November 1955 (30mm datestamp)



Twenty cents overseas surface rate.  
Christmas Island 14 May 1953 (26mm datestamp)

**TWENTY CENTS RATE**



Singapore Administration

**FIFTY CENTS RATE**

Airmail to Australia was 50 cents whether sent by sea to Singapore or Fremantle.  
Christmas Island 27 February 1956 (29mm datestamp)



Double rate  
Christmas Island 3 April 1955 (29mm datestamp)

Singapore Administration

**REGISTERED**

50 cents airmail via Singapore, 20 cents registration.

Christmas Island 25 September 1953 (26mm datestamp), Singapore 1 October, Sydney 4 October





**SECTION C: 1958 - 1969**

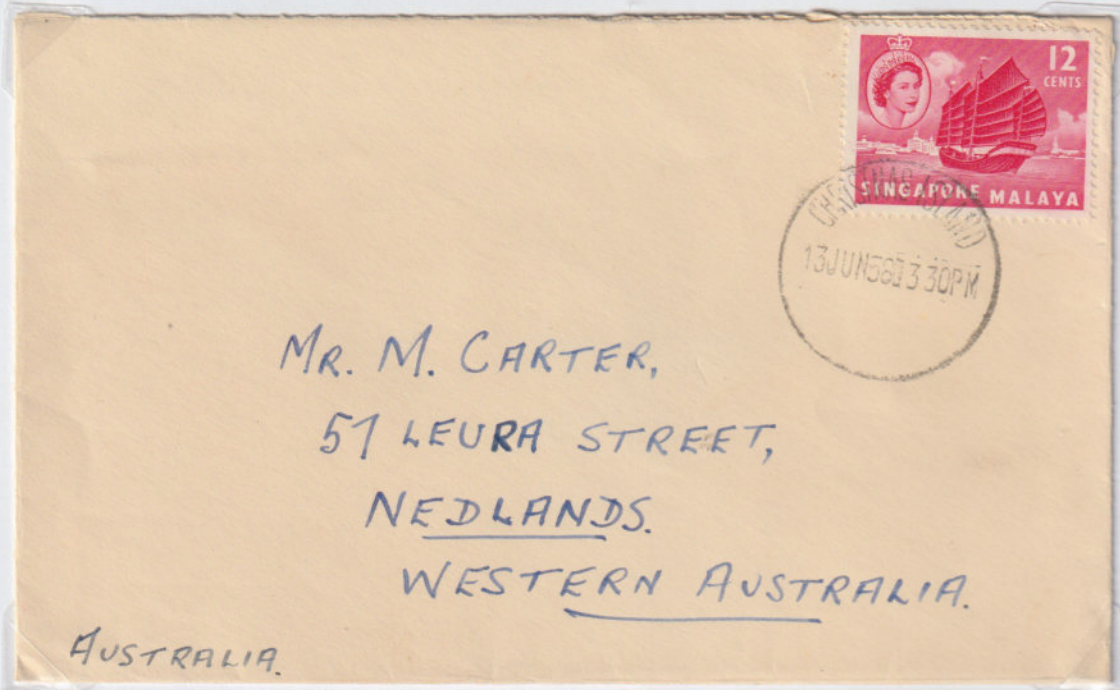
Crown Colony

**SINGAPORE POST OFFICE**

From 1 January 1958 to 1 October 1958, Christmas Island became a Crown Colony pending transfer from Singapore administration to an Australian territory.

This cover illustrates the continuing operation of the Singapore post office operated by the British Phosphate Company in the Crown Colony period.

Christmas Island  
13 June 1958  
(29mm datestamp)



Christmas Island  
4 October 1958  
(29mm datestamp)

Australian administration commenced on 1 October 1958 but Australian stamps and datestamps were not available until 15 October so the Singapore post office continued. Possibly the only example of a foreign post office providing general postal services in Australia.

**AUSTRALIAN ADMINISTRATION**



### HANDOVER

Telegram of official confirmation from Singapore to Australia regarding arrangements for the handover of postal and money order services on Christmas Island 14 October 1958.

Photocopy

## TELECOMMUNICATIONS DEPARTMENT, MALAYA

Tg. 4

LOCAL No. { IN \_\_\_\_\_  
OUT \_\_\_\_\_

NO. OF TELEGRAM \_\_\_\_\_

# RECEIVING FORM

CLASS \_\_\_\_\_

The first line of this Telegram contains the following particulars in the order named--  
Number of Message, Office of Origin.  
Number of Words, Date, Time handed in and Official instructions.

Date Stamp

14 OCT 1958

No. 5 O.O. CANBERRA No. W. 64 Date 7 Time 1630

**THIS FORM SHOULD ACCOMPANY  
ANY COMPLAINT OR ENQUIRY  
REGARDING THIS TELEGRAM**

To KKT NEPAT OFFICE OF DESTINATION  
BG ETAT OFFREP XMASISLAND

7 REGARDING POSTAL SERVICES UNDERSTAND SINGAPORE ACCOUNTS FOR ALL  
TYPES SERVICES WILL BE KEPT OPEN BY POSTMASTER UNTIL FOURTEENTH INCLUS  
INCLUSIVE AFTER WHICH NEW STAMPS BECOME USABLE FOR ALL POSTAL ARTICLES  
STOP IN RESPECT MONEY ORDERS AFTER THAT DATE REQUESTED SINGAPORE ~~CON~~  
CONTINUE TO CLEAR AS BEFORE ON BASIS OF QUARTERLY REIMBURSEMENT BY OR ON  
BEHALF CHRISTMAS ADMINISTRATION STOP WILL KEEP YOU INFORMED \*  
TERRITORIES.

*U. Oka*  
Accountant

Received At \_\_\_\_\_ From \_\_\_\_\_ By \_\_\_\_\_

Sent At \_\_\_\_\_ To \_\_\_\_\_ By \_\_\_\_\_

Photograph stamped on back  
"POSTMASTER-GENERAL'S DEPARTMENT  
Reproduction of this photograph should be in  
black and white at least 1 1/4 times the size of  
the actual stamp. If actual stamp size, the  
block should be defaced by a line across the  
face of the design. Actual stamp size is  
15/16" x 1 1/8"

PUBLICITY





**TRAINING**

Despite the process of transfer of Christmas Island from Singapore to Australian administration having commenced a year before, it was only three weeks before the belated handover was due to occur that a request was made for the Singapore Post Office to provide training for a local replacement.

Cable dated 11 September 1958

Photocopy

59

DEPARTMENT OF EXTERNAL AFFAIRS  
**RESTRICTED**  
**OUTWARD CABLEGRAM.**

HB:ABK

0,11494.

Sent: 11th September, 1958  
1015.

TO:

Australian Commission,  
SINGAPORE.

625 RESTRICTED

Christmas Island - Postmaster.

Your 359, paragraph 3.

Please seek formal agreement of Singapore Government for present Postmaster to continue on loan to Christmas Island Administration for three months from 1st October. During that period a local replacement will be trained to take over on a permanent basis.

2. Please suggest present Singapore Officer should continue on present salary plus free quarters during period of loan with repatriation for himself and family at end of three months and payment on pro rata basis for leave credits accumulated during additional period.

A./MIN. & DEPT. E.A. (3044/4)  
MIN. & DEPT. TERRITORIES  
TREASURY  
P.M.'S.

(Cost £4/10/-)

11th September, 1958.

NB. If the Departments of Territories and Treasury had thought about it a couple of weeks earlier they could have posted a letter (cost 2/-) instead of a cable (cost £4/10/-)



## SINGAPORE CURRENCY

Singapore laws and currency remained in force so as not to disrupt the lives of the 2,000 Chinese, 500 Malays and 150 Europeans living on the island.<sup>1</sup> These, and subsequent Christmas Island issues, are the only Australian stamps denominated in a foreign currency. These stamps were not valid for postage in Australia and Australian stamps were not valid for postage on the island.

Christmas Island Aust 1 Indian Ocean 15 October 1958



Full philatelic service for Christmas Island stamps was available from GPO Melbourne. Demand for first day covers was such that these covers would have been postmarked in Melbourne using the Index 1 datestamp and delivered from there. NB Datestamp 2 was in use on Christmas Island in December 1958 (see postage due aerogramme on subsequent page).

Christmas Island post office was operated by the British Phosphate Commission for the Australian Postmaster General's Department serving local postal needs. The Christmas Island post office has never provided a delivery service for local mail which residents collect from their box at the post office.

<sup>1</sup> Hasluck, P. (1958). Second Reading speech, Christmas Island Bill, *Parliamentary Debates (Hansard)*, Vol. H. of R. 20 (ns), 21 August, pp. 618 - 20



British Phosphate Commission

**FIRST DAY COVER**  
**Wesley Cover Service**

Wesley Cover Service is the major producer of Australian first day covers and, as with the official Post Office covers, was not constrained by any requirement to limit their franking to meet a postage rate.

Christmas Island Aust 1 Indian Ocean 15 October 1958

**BY AIR MAIL**  
PAR AVION




*Christmas Island*  
Indian Ocean

FIRST ISSUE AUSTRALIAN  
ADMINISTRATION



G. R. RAYMOND, ESQ,  
6035 HORNWOOD DRIVE  
HOUSTON, (36),  
TEXAS.

UNITED STATES OF AMERICA.

Official  First Day Cover



DEFINITIVE STAMPS  
**CHRISTMAS ISLAND**

Artist's watercolour unadopted essay



# FIRST DAY COVER

## Guthrie

The extraordinary nature of the issue of Australian design stamps denominated in Singapore currency generated philatelic interest and a number of commercial first day covers were produced in addition to the official PMG covers. These covers franked at the 10 cents surface rate to Australia which, if they were mailed from Melbourne to the address as was then the requirement, would not have been valid for postage. Christmas Island Aust 1 Indian Ocean 15 October 1958 (Australian address label removed)



Mailed under cover.

Christmas Island Aust 1 Indian Ocean 15 October 1958

Guthrie: Bergen enhanced



### SINGAPORE STAMP INVALID

After 15 October 1958, Singapore stamps were not valid for use on Christmas Island. Someone affixed the 30 cent Singapore stamp (and possibly the two Australian stamps) to the W&G Foyle (London) printed aerogramme which was forwarded to Christmas Island for posting. The aerogramme advised that the company could not supply the book ordered. The Singapore stamp was annulled and 15 cents was insufficient for 20 cents surface mail to the USA, so the airmail indicium was annulled and T 10 in circle was inscribed. Aerogrammes, of any sort at any time, posted from Christmas Island are scarce. Written 11 November 1958, stamp and indicium annulled, T 10, Christmas Island Aust 2 Indian Ocean 23 December



This aerogramme confirms that datestamp 2 was in use on Christmas Island shortly after the BPC post office opened.



British Phosphate Commission

### CHRISTMAS CARD

The opening of the BPOC post office and the stamps inscribed Christmas Island stimulated interest in posting Christmas cards from the island. The card (enclosed) was posted under cover from the USA and posted with the 20 cents surface rate (no card concession rate).

Christmas Island Aust 2 Indian Ocean 3 December 1958



Mr. & Mrs. Alvin C. Zurcher,  
9 Ridgeway Drive,  
Chillicothe, Ohio, U.S.A.

Further confirmation of the use of datestamp 2 on Christmas Island shortly after the BPC post office opened.

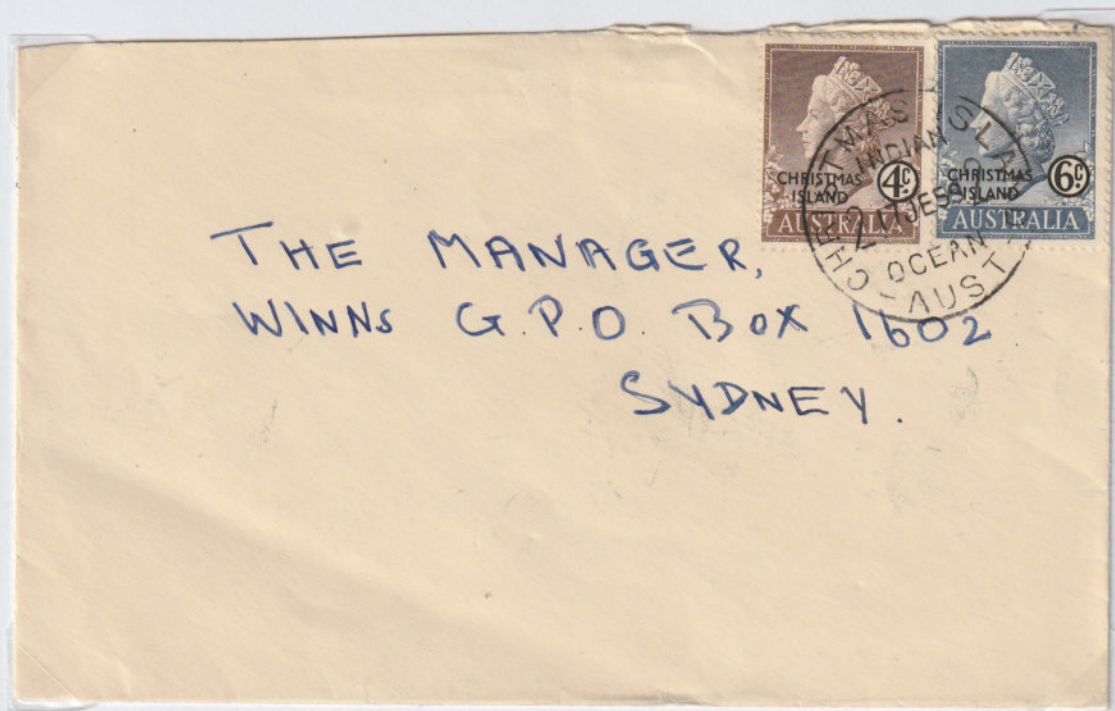
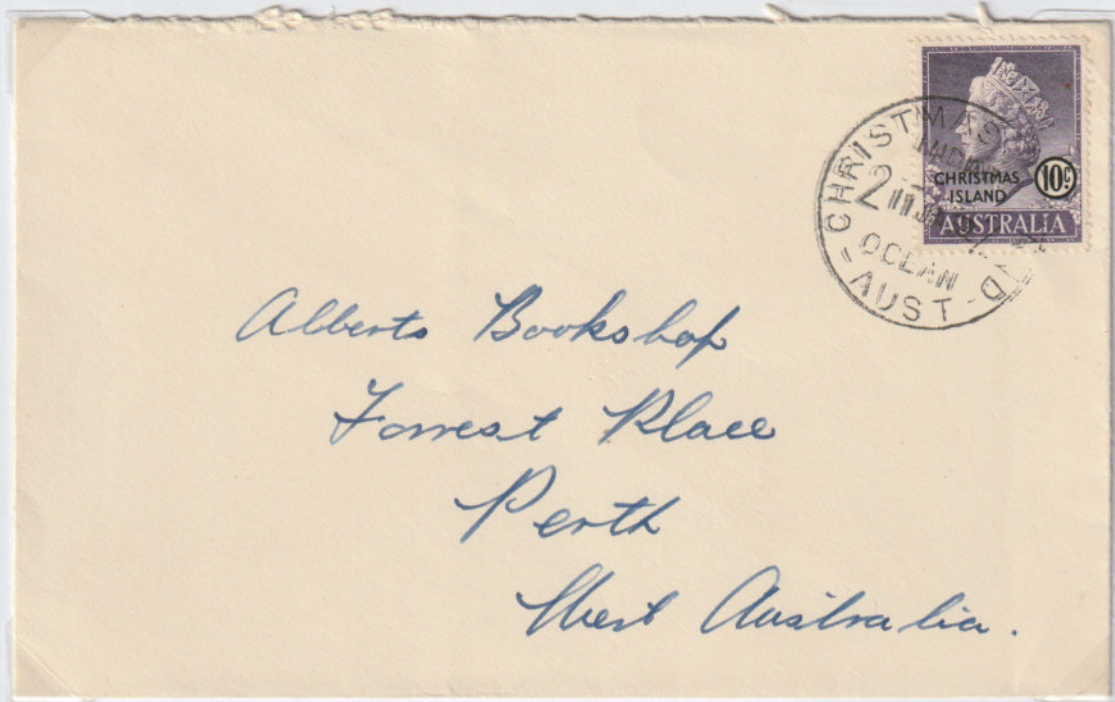


British Phosphate Commission

**LETTER SURFACE RATE: AUSTRALIA**

The *Philatelic Bulletin* (August 1958) did not list the surface rate for letters and postcards to Australia. It may be assumed that the Australian internal rates applied viz. letters (4d/10 cents) and postcards (2½d/6 cents) so the covers shown below represent carriage at the correct rates. The letter rate was a reduction from 12 cents.

Christmas Island Aust 2 Indian Ocean 11 June 1961



Christmas Island Aust 2 Indian Ocean 17 June 1959