

The Postal Markings Illustrated

Note. Handstamps described in this size type have the *potential* to be found on postage stamps.

ABERDEEN STREET
See Perth, Aberdeen St

ABBA RIVER

WF4 Group Settlement No 16. 8km E Busselton.
RO 1-08-22. AO 1927. K 31-12-30. CI 1-06-31.



Type CDS A25. No dates known.

ACTON PARK

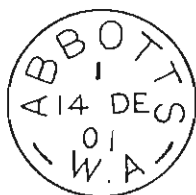
WF4. Group Settlement No 28. 11km S Busselton.
RO 1-11-22. CI 15-10-27.



Type CDS A27.
5-10-23

ABBOTTS

PI1 Gold mine. 32km N Meekatharra.
RO ?-05-96. P&To 17-08-98. AO 21-11-04. RO
18-02-08 CI 31-10-13.



Type CDS 3b25
In: nil. 1.
17-09-00 to 20-10-05

AGNEW

RK2. PC 6438. The EMU goldmine 8km NE Lawlers.
(F) AO Emu Mine Lawlers (R) Agnew 17-12-36. CI
2-07-79.



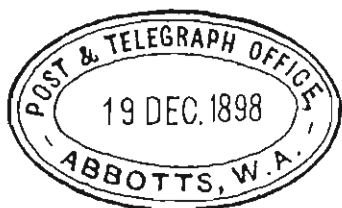
Type CDS E30
22-04-37 to close.



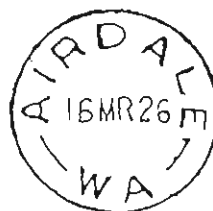
Type CDS D25
Note 'ABBOTTS'
23-06-10 to 5-08-10.

AIRDALE

WF4 Group Settlement No 84. 11km E Margaret River.
(F) RO Shirley . (R) Airdale ?-08-24. AO 1927. CI
14-09-29. K 2-05-32. CI 31-01-35. K 1-06-47. CI
17-02-65.



Type ORS 2
19-12-98 to 30-10-99



Type CDS C27
16-03-26 to 29-07-27.

AJANA

QE2 PC 6532. Farming area 80km N Geraldton.
K 11-08-15. RO 1-01-18. AO 16-11-22. CI 19-04-79.



Type CDS A28
17-03-17 to 2-04-74.
Known in violet.



Type CDS G31.(PWM 71)
ca 1974 to close
Known in violet.



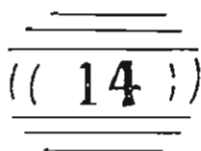
Type PA Pd 2
17-12-47 to 18-09-51
Usually in dull red.



Type PA UPd 2
26-08-48 to 1-10-49



Type PO 1
18-12-54 to 8-06-58
Usually in dull red



Type Ob NG 14
18-12-54 to 8-06-58
Usually in dull red



Type Ob 15-6
?-09-59 to 27-02-83



Type PA PO 2b
From 2-11-50
Struck in dull red.



Type Ob BL
20-11-91 to 30-06-97
Known in magenta



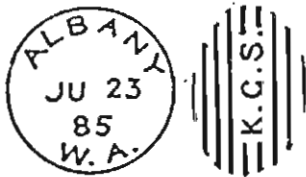
Type CDS 1
26-06-60 to 20-06-90
Known in blue



Type CDS 2a
20-06-90 to 2-01-93



Type CDS 2b
30-01-91 to 30-06-97



Type DxL 1
23-07-85 to 24-10-96



Type DxL 2a
1-09-92 to 19-01-95



Type DxL 2b
Reported but not described by Juhl (1983,83), ca 1906

Y - x - V



Type DxPO 1a
16-12-97 to 19-08-05

Foot of P opposite a space
Last A of AUSTRALIA opposite bars 5 & 6
Small PO
Short inner dash at right
x ≈ 5.5m.

Y - x - V



Type DxPO 1b
10-06-98 to 26-11-02

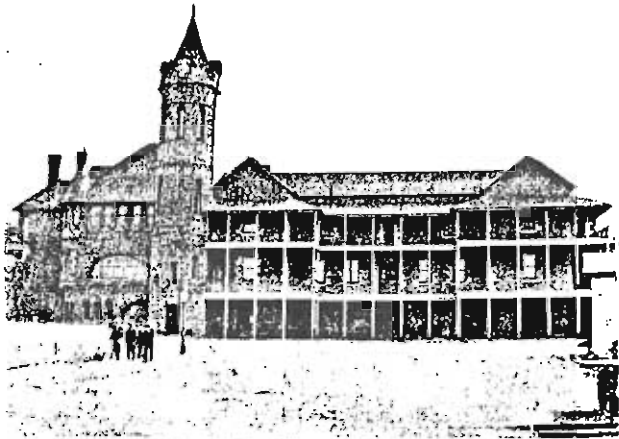
Foot of P opposite bar 8
Last A of AUSTRALIA opposite bars 5 & 6
Large PO
Short inner dash at right
x ≈ 4,5mm.

Y - x - V



Type DxPO 1c
28-03-03 to 8-10-08

Foot of P opposite bar 8
Last A of AUSTRALIA opposite bar 6
Large PO. Wide O.
Long inner dash at right
x ≈ 5.0mm.



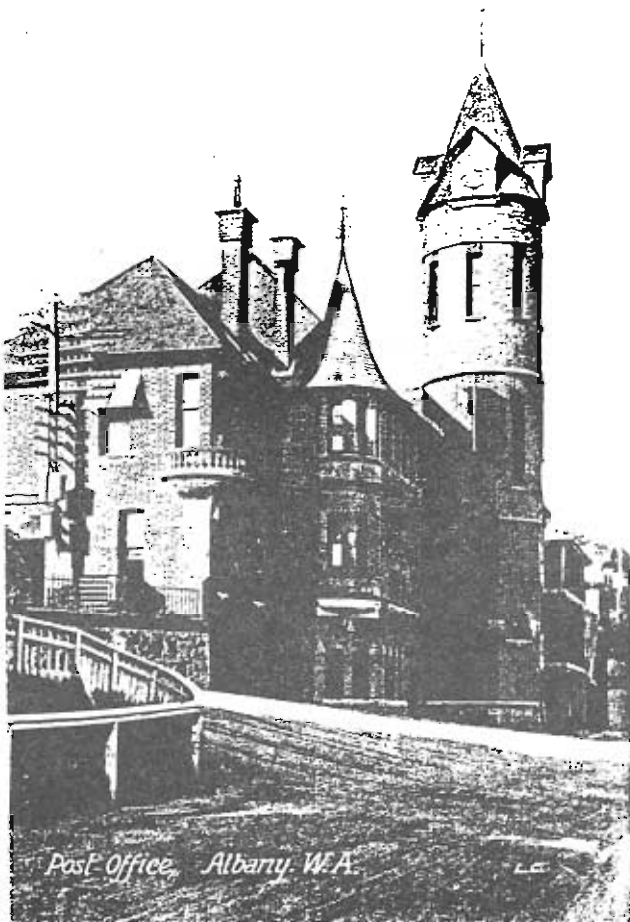
Post Office, Albany W.A.



Type CDS 3b 1
30-11-95 to 20-09-97



Type CDS 3b 2
In: 1-6
11-06-97 to 20-09-10



Post Office, Albany, W.A.

Albany Post Office ca 1900.



Type CDS 3b 3
In: A-F
5-11-97 to 26-07-16
Known in green



Type CDS A25
28-08-06 to 7-02-46



Type CDS A25T
7-12-07 to 22-03-23



Type CDS A33T
21-03-24 to 5-05-32



Type CDS E30T
22-10-56 to 7-10-80



Type CDS B27
12-03-18 to 2-09-32



Type CDS Ea30a. (PWM 56)
T/A 4.5mm. Wide Y. Arcs 10mm.
31-10-56 to 22-06-78



Type CDS C30T
20-01-33 to 2-12-49



Type CDS Ea30b. (PWM 58)
T/A 4.5mm. Narrow Y. Arcs 12mm
11-07-60 to 16-05-78



Type CDS D27
22-05-48 to 17-12-66



Type CDS F31. (PWM 63)
29-07-67 to 6-09-76
Two identical in use at PO Sept 1976



Type CDS E31
Large date 1-04-55 to
Small date 27-10-61 to 22-12-75



Type CDS F31T
19-02-65 to 11-02-76



Type CDS G31 (PWM 68)
10-09-76 to 31-08-78



Machine
From 1953



Type CDS G31T
3-11-75 to 12-12-79



Type PdX28
26-10-14 to 27-10-53



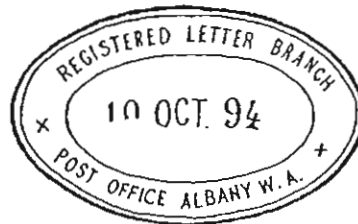
Type CDS G33Ra
Narrow letters. Small PC
20-01-81 to 20-01-84
Nine identical in use at PO Jan 1982



Type PdF31
5-01-75 to 2-11-77



Type CDS G33Rb
Small wide letters.
1-02-83 to 29-01-84



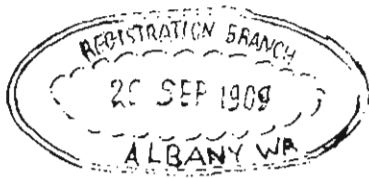
Type ORS 2a
14-08-92 to 16-03-09



Type SBi
26-08-07 to 16-10-07
Known in green



Type ORS 2b
10-05-97 to 15-02-05



Type ORS 3
20-09-09 to 21-09-12



Type CDS E30b
T/A 3.5mm. Dot at base.
30-11-37 to 19-09-63



Type ORS 3
30-06-09



Type CDS E31c
T/A 4.5mm. Small dash at base
24-07-50 to 7-06-55

ORS 1 MAIL ROOM / ALBANY 18-11-55 to 4-12-56
ORS 1 MAIL ROOM / POST OFFICE ALBANY 24-08-64 (MAIL ROOM 24mm)
ORS 1 MAIL ROOM, / POST OFFICE ALBANY 2-04-67 to 2-03-68 (MAIL ROOM 32mm)
ORS 1 MAIL ROOM / POST OFFICE ALBANY 6330 9-10-75 to 31-08-78
ORS 2 MONEY ORDER OFFICE ALBANY 22-11-01
ORS 3 REGISTERED LETTER BRANCH ALBANY 19-05-13



Type CDS F31 (PWM 62)
25-02-63 to 2-05-64

ALBANY NORTH

ALBANY WEST

YH2 Suburb of Albany.
AO 15-12-36. CI 2-05-64

YH2 PC 6330 Vancouver St. Albany.
AO 9-12-46. CI 31-10-79.



Type CDS E30a
Archival strike
Incorrectly inscribed North Albany.

12/84



Type CDS E30
Large date 30-11-48
Small date 22-05-72 to 31-10-79

ALDERSYDE

VH1 PC 6306 Timber and farming. 28km E Brookton.
K 2-03-16. RO 1-08-16. AO 1-11-22. CI 31-12-76.



Type CDS A27
15-04-24 to 27-09-55



Type CDS F31
22-10-73 to close.

ALDINGA

VH4 Farming 24km NNW Wickepin.
RO 16-06-12. (R) Stratherne July 1915.

No marking known.

ALEXANDRA BRIDGE

XF1 PC 6288 Group Settlement No 69. 10km E Kar-
ridale.
(F) K Group 69. (R) Alexandra Bridge 16-06-39. AO
1-06-42. CI 31-01-74.



Type CDS E30
Large date 21-05-51 to 11-12-56
Small date 30-10-59 to close.

ALFRED COVE

VF2 PC 6154 Suburb of Perth, Canning Highway.
AO 1-05-50. CI 1-08-83.



Type CDS E30a
T/A 6mm.
10-11-52 to ca 1953
Irreparably damaged 1953.



Type CDS E30b
T/A 4mm.
Large date 23-07-62 to 5-04-68
Small date 16-04-71 to 16-08-75



Type CDS Gd/c37R
24-09-79



Type CDS G33R
30-11-81 to close

ALLANSON

WG1 PC 6225. Coal mine 6km W Collie.
(F) AO West Collie. (R) Allanson ?-12-19. CI
31-07-81.



Type CDS A28a
Small letters, flat topped 'A's
18-05-21 and several illegible dates to 1931.



Type CDS A30b
Taller letters, pointed topped 'A's
Large date 13-12-24 to 4-02-59
Small date 11-11-65



Type CDS F31. (PWM 64).
10-07-67 to 10-12-76



Type CDS G33
29-08-79 to close.

ALLAWAH GROVE

UF3. Outer suburb of Perth 3km S Guildford.
AO Allawah 19-11-51. (R) Allawah Grove May
1952. CI 31-08-55.

Note. The cds is inscribed Allawah Grove.



Type CDS E30
31-11-51 to 7-06-55.

AMBERGATE

WF4. Group settlement No 44, 5km SW Busselton.
RO 1-02-24. AO 1927. K 11-09-29. CI 27-02-51.



Type CDS A30
4-06-25

AMPHION (a)

VG4 Timber mill 6km W Pindalup.
(F) RO 26 Mile Camp, Holyoake. (R) Amphion
12-01-16. CI 08-04-16.

No marking known.

AMPHION (b)

RO 1-09-22. FB 14-11-26. K & FB March 1934 to
23-11-37 when business taken over by Chadoora.



Type CDS A28
23-05-23 to 31-03-25



Type CDS C30
9-07-33 to 3-09-37

ANACONDA

RL3 Copper mine 8km SW Murrin Murrin.
AO 16-08-03. (R) Eulaminna 15-10-06.



Type CDS 3b

ANGELO STREET (SOUTH PERTH)

UF3 RO 9-11-23. AO 1927. CI 10-07-39 when South Perth official Post Office opened in Angelo Street. For later re-opening see SOUTH PERTH, ANGELO STREET.



Type CDS C30
12-01-31 to 27-09-37

ANNEAN

P14 Gold mine 16km W Nannine.
PO 1-01-93. CI 30-06-94.

No marking known.

APPADENE

XG1 Group settlement No 83, 11km N Manjimup.
RO 15-01-24. AO 1927. K 15-07-29. CI 1-06-63.



Type CDS A30
20-12-27

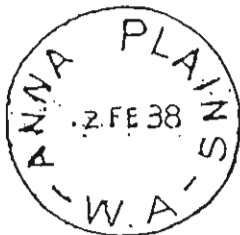
ANKETELL

RI2 Pastoral station 32km W Sandstone.
RO 1-01-10. CI 28-02-10

No marking known.

ANNA PLAINS

IL1 Pastoral station on the Eighty Mile Beach 112km NE Wallal.
K ?-10-19. (AO ca 1934?). FB at times. CI 1-12-58.



Type CDS C30
4-12-34 to 2-02-38.
Always in violet.

APPLECROSS (a)

VF2 Suburb of Perth on Canning Highway.
AO Applecross near head of jetty 12-06-05. (P&TO 1912). (PO 1927,1935). Subsequently (R) Applecross North when new official Post Office Applecross was opened on Canning Highway 10-03-54.



Type CDS A25
13-12-07 to 18-06-08



Type CDS D27
 31-09-15 to change of location
 This cds continued in use at the new location.
 Note the inscription "AUSTRALIA"



Type CDS E31b
 T/A 7mm. Side dashes 2mm.
 Large date 8-08-61 to 13-01-68
 Small date 21-09-70 to 26-11-75



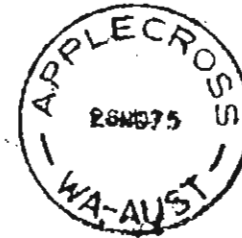
APPLECROSS (b)

PC 6153
 O 10-03-54 Office on Canning Highway

Type CDS E31c
 T/A 6mm. Side dashes 2.5mm.
 Large date 2-07-62 to 8-07-69
 Small date 17-07-70 to 26-11-75



Type CDS D27
 10-03-54 to 27-09-62
 Note. This cds continued in use with the change in location.



Type CDS F31
 22-10-65 to 30-11-77.
 Note. Also known used 3-05-66 as a PAID handstamp struck in red.



Type CDS E31a
 T/A 4mm. Side dashes 4mm.
 Large date 14-08-59 to 7-08-65
 Small date 10-04-70 to 26-11-75



Type CDS G31:G31T
 Converted to a time handstamp in 1976.
 G31 6-05-68 to 26-11-75
 G31T 14-02-77 to current
 Note. This was the first handstamp supplied to Western Australia bearing the postcode. In March 1968.



Type CDS Gd/c37R
Known postally used but mainly used in the Telegraph Section. In violet or black
28-08-78 to 2-10-81



Type CDS G33Rd-(2)
Small wide lettering, number (2).
16-02-83 to current



Type CDS G33Ra
Tall narrow lettering, large date, in violet or black, two identical in use.
17-08-78 to 25-08-80



Machine
From 1970



Type CDS G33Rb-(1)
Small narrow lettering, small date, number (1).
19-11-79 to 1-02-83



Type PdE30
Requisitioned 17-02-56

PdE30 in black 5-01-58
in red 17-03-61 to 3-05-65
PdE30a Value wheels removed and date reset centrally
7-02-66 to 5-01-68
PdE30b as E30a. Converted to small date
20-11-69 to current



Type CDS G33Rc
Small wide lettering, two identical in use.
1-02-83 to current

Priority Paid.
45mm. 12 hour.
Standard type, not illustrated.

RRS 2-a POSTMASTER/APPLECROSS, 6153. 27x43mm. ca 1975
RRS 2-b POSTMASTER/APPLECROSS, 6153. 27x48mm. ca 1977

APPLECROSS NORTH

VF2 PC6153 40 Ardross Street.
(F) AO Applecross (a). (R) Applecross North
10-03-54.



Type CDS E30
Large date 14-04-67 to 6-09-68
Small date 10-06-73 to 11-11-75



Type CDS G33R
15-01-83 to current

ARDATH

VII Farming area 32km NE Corrigin
RO 16-08-16. AO 1-11-17. CI 31-12-84.



Type CDS D27
25-02-19 to 29-03-27



Type CDS C29
Large date 13-11-28 to 19-06-59
Small date 12-06-61 to 8-06-80



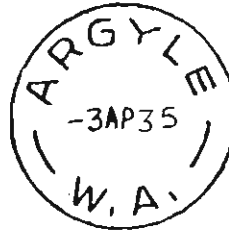
Type CDS G33T
Supplied 4-08-78 to close

ARDROSS PARK

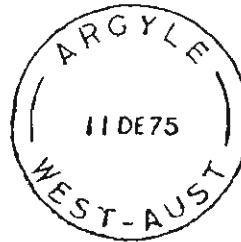
VF2 Suburb of Perth. Office on Canning Highway
AO 1-09-49. CI 9-03-54. Replaced by Applecross.



Type CDS E31
6-03-53



Type CDS C30
20-02-31 to 24-06-48.
Note. Cds destroyed in fire 7-07-48



Type CDS E31
Converted to small date December 1969
Large date 12-11-49 to 18-11-69
Small date 5-01-70 to close

ARGYLE

WF3 PC 6239 Farming area 6km NW Donnybrook.
RO 1-06-09. AO 8-10-10. CI 12-12-75.



Type CDS D27
31-10-10 to 9-10-16

ARMADALE

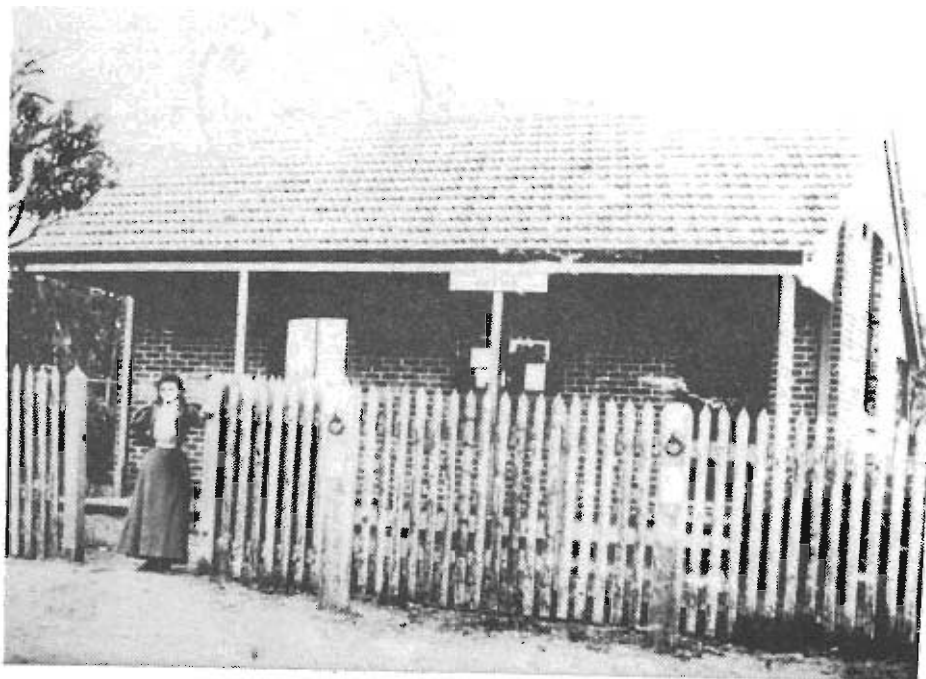
VG1 PC 6112 Suburb of Perth 25km SE of Perth.
RMB ?-10-1895. P&TO 1-09-98



Type CDS A25
?-08-21 to 16-11-28
Note. Unusual outward reading inscriptions.



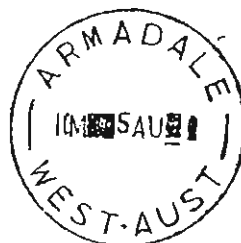
Type CDS 3b
In: nil. 1.
2-11-00 to 6-11-08
Known in green.



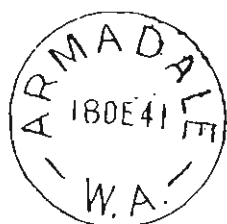
Armadale Post Office ca 1898
 Courtesy Post and Telecom Museum



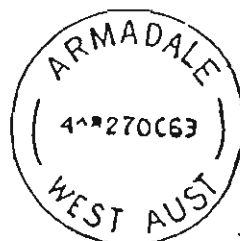
Type CDS A25
 4-09-06 to 6-03-54



Type CDS E31T
 ?-09-48 to 5-09-49

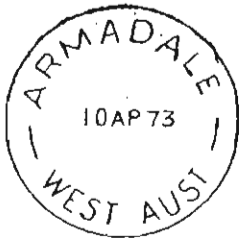


Type CDS C28
 4-11-29 to 15-09-56



Type CDS Ea30Ta
 Narrow letters. In March 1972 the time wheels were removed and the date centred to make Ea30a.

Ea30Ta 8-10-56 to 1-03-72
 Ea 30a 7-04-72 to 29-06-73



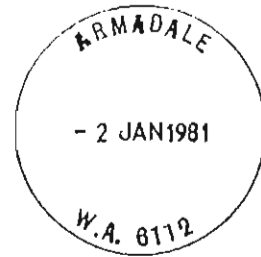
Type CDS Ea31b (PWM 56)
Wide letters, very wide "M".
20-11-65 to 3-05-73



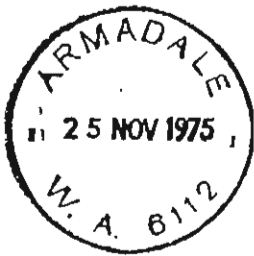
Type CDS G33Rc
Tall narrow letters. large date line.
27-08-79 to 2-01-81



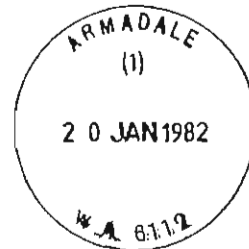
Type CDS Ea31c
Wide letters, medium width "M".
31-05-68 to 11-11-83



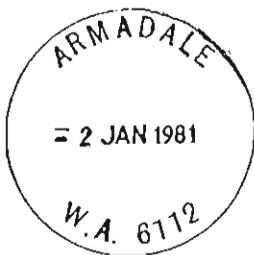
Type CDS G33Rd
Small narrow letters, two identical in use 2-01-81.
2-01-81 to 7-07-83



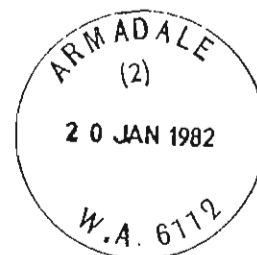
Type CDS G33Ra
Wide letters, thick outer ring, short side dashes, two identical in use 25-11-75.
28-12-73 to 16-01-79



Type CDS G33Re-(1)
Similar to G33Rd but with No (1).
2-06-81 to 1-02-83



Type CDS G33Rb
Tall narrow letters, small date line, two identical in use 2-01-81.
13-08-79 to 2-01-81



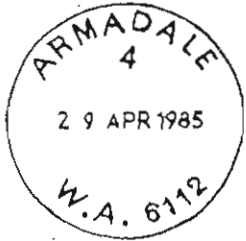
Type CDS G33Rf-(2)
Similar to G33Rb but with No (2).
28-09-81 to 9-08-82



Type CDS G33Rg-(3)
 Small wide letters with No (3).
 9-12-83 to current



Type SBi
 6-05-04 to 20-05-04
 Known in violet



Type CDS G33Rh-4
 Small wide letters with No 4.
 29-04-85 to current

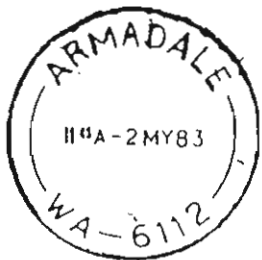


Machine
 From 1975

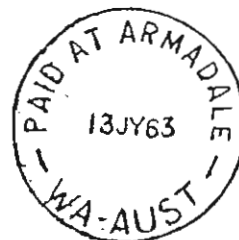


Type Pd E31 (PWM 66)
 Requisitioned 19-10-55

Pd E31 21-11-62 to ?-03-65
 Pd E31a Value wheels removed and date reset centrally 10-08-65 to 6-11-65
 Pd E31b Converted to small date ?-?-?



Type CDS G33T
 5-04-83 to current

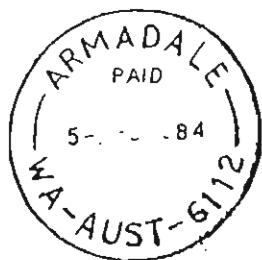


Type Pd F30 (PWM 66)
 23-10-72 to 13-07-83

ARRINO (a)

SF2 Farming area 19km NW Three Springs
TO/PO 1-06-74. CI 31-05-80.

No marking known.



Type Pd J33T
?-03-84 to current

ARRINO (b)

TO 21-12-93. RO?. CI 30-09-98



Type CDS 3b
29-06-95 to close
This cds was in use later.

ARRINO (c)

AO 1-01-04. CI 21-02-06



Type CDS 3b
1-11-04 to 10-10-05
Known in violet

ARRINO (d)

AO 1-04-07. CI 13-07-07.



Type ORS 2
Ca 1904



Type CDS A27
29-06-07

ORS 1 POSTMASTER / ARMADALE, WA 6112. Two slightly
different. 1975 to 1977.
ORS 1 TELEGRAPH OFFICE / ARMADALE, W.A. 6112. 1976.

ARRINO (e)

PC 6520

RO 28-09-10. AO 10-06-11. CI 20-11-81.



Type CDS B29
Large wide letters.
28-02-12 to 1-09-14



Type CDS B27
Small letters.
?-10-16 to ?-10-74



Type CDS G31
1-10-74 to close

ARTHUR RIVER

WH1 PC 6315 Farming area 29km W Wagin.
PO 1-11-66. P&TO 23-11-82. AO 1-09-03. (P&TO
1908, 1912). CI 20-11-81.

Type Ob?

Type CDS?



Type Ob AR
Ca 1886-1888



Type CDS 3b
19-04-95 to 28-01-07
Known in violet
Note. Year frequently omitted or incorrectly set.



Type CDS D27
1-04-09 to close



Type ORS 2
7-10-01 to 28-12-06

ASCOT MILITARY CAMP
Will be treated elsewhere, see note page v.

ASHBURTON

KE3 Town at mouth of Ashburton River.
PO ?-08-84. P&TO 2-07-85. (R) Onslow 1885.
Note. The obliterator and cds remained in use at Onslow.



Type Ob 15-3
Ca 1884-1885



Type CDS 3a
Ca 1884-1885

ASHTONDALE

XH2 Farming area near Cranbrook
RO 1-11-13. CI 6-03-18.

No marking known.

ATTADALE

VF2 PC 6156. Suburb of Perth. Office in Moreing St.
AO 3-08-53. CI 1-09-81.



Type CDS E30
Large date ?-?-?
Small date 15-11-75

ASHFIELD

UF3 PC 6054 Suburb of Perth between Bayswater and Bassendean.
AO 1-10-65. CI 1-03-68. Replaced by Whatley.



Type CDS F31
2-09-66 to close

AUGUSTA (a)

XF1 Town at mouth of Blackwood River.
PO January 1836 to 1840.

No marking known.

AUGUSTA (b)

PC 6290
K 9-02-15. AO 21-06-15.



Type CDS B28
28-05-19 to 29-11-65



Type CDS F31 (PWM 65)
29-03-66 to 2-08-75



Type CDS G31 (PWM)
19-08-75 to current

AUSTIN
See Lake Austin

AUSTRALIA UNITED

RL3 Gold mine 18km N Murrin Murrin.
RO 14-04-06. CI 31-07-08

No marking known.

AUSTRALIND (a)

WF2 Farming area 8km NE Bunbury.
PO 14-04-42. AO 1-04-08. CI 31-12-62



Type PA PO 1c
From 1843
Known in black, red and magenta.



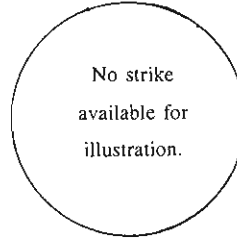
Type PA Pd 2
From 1843
Known in red and magenta.



Type PA UPd 2
From 1843



Type PO 1
3-10-54 to ca 1859
Known in red.



Type CDS E30

AUSTRALIND (b)



Type Ob VG
Ca 1854-1859

PC 6230
Non-official Office in new shopping centre 15-12-82



Type CDS G33R
15-12-82 to current



Type Ob 15-17
31-07-60 to ca 1905



Type CDS 1
Mid 1859 to 20-01-24

AYLEN'S (SIDING)

UL2 Siding 11km N Widgiemooltha.
RO 1-10-16. CI 30-06-20.

No marking known.



Type CDS A30
3-03-31 to 22-12-62